

# **Roxburgh College (8407)**

---

## **2007 School Level Report**

---

---

Please check the data in this report. If, after comparing it with your own records, you deem it to be incorrect or incomplete, follow the directions on the web page below:

- <http://www.sofweb.vic.edu.au/standards>, then click on '**Accountability and Improvement**', then click on '**School Performance Reports**'.
- 
-

# Contents

---

	<b>Page No.</b>
Privacy	3
SFO Density and LBOTE	4
Teacher Judgments against the VELs	5-13
AIM Reading	14
AIM Mathematics	15
VCE Results	16-19
VET	20
VCAL	21
Teacher Assessment of Student Progress (PSD students)	22-23
Enrolments	24
Apparent Retention	25
Real Retention	26
Exit Destination	27-30
Student Absence	31
Parent Opinion	32-33
Staff Opinion	34
Staff Sick Leave	35
Teaching Staff Retention	36
Bank Balances	37

## Privacy

---

When reporting on the school's performance to the school community, care must be taken to avoid the disclosure of information that can directly or indirectly identify an individual. This may be a particular issue when reporting on the achievement of specific cohorts of students or the opinions of staff where there are small numbers.

In situations where confidentiality cannot be assured, schools may wish to report on the mean result or provide a written comment on school, year level or cohort performance.

Where the School Level Report is provided to school council members as part of any annual reporting process, or used for discussion on a school's performance, such as in consultation with the school community in the school self-evaluation process, it is important to remind school community members of their duty to only use this information for the purpose it was provided, and that the material must be kept confidential.

It is important to note that information that identifies an individual or can be used with other readily available information to identify a person is now protected by the *Information Privacy Act 2000* (<http://www.education.vic.gov.au/about/deptpolicies/informationprivacy.htm>).

---

# SFO Density and LBOTE

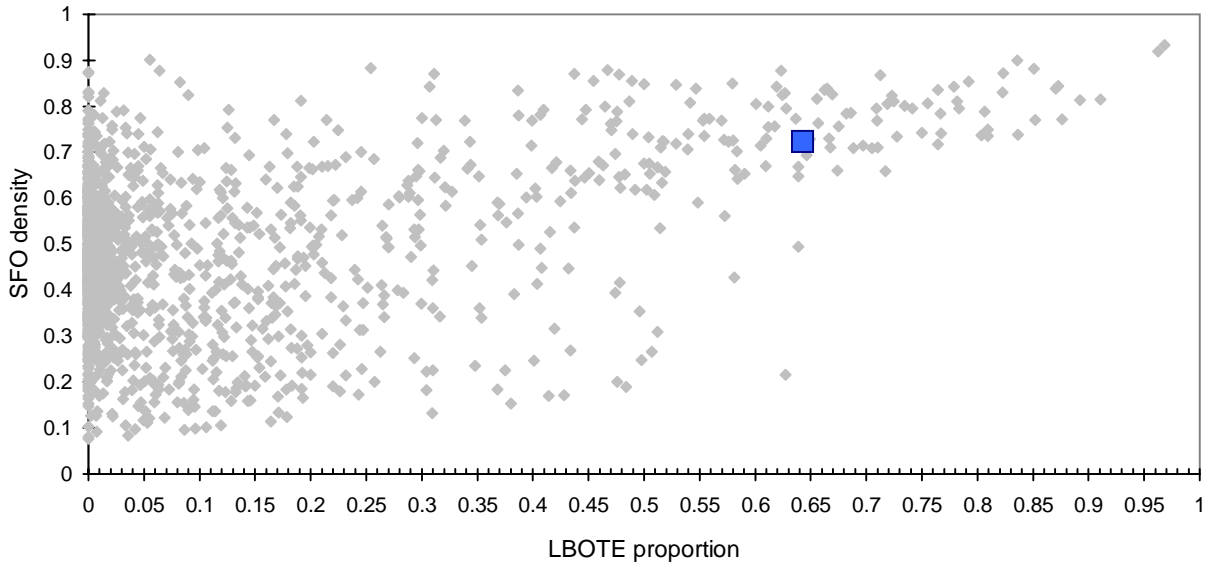
**School no:** 8407

**School name:** Roxburgh College

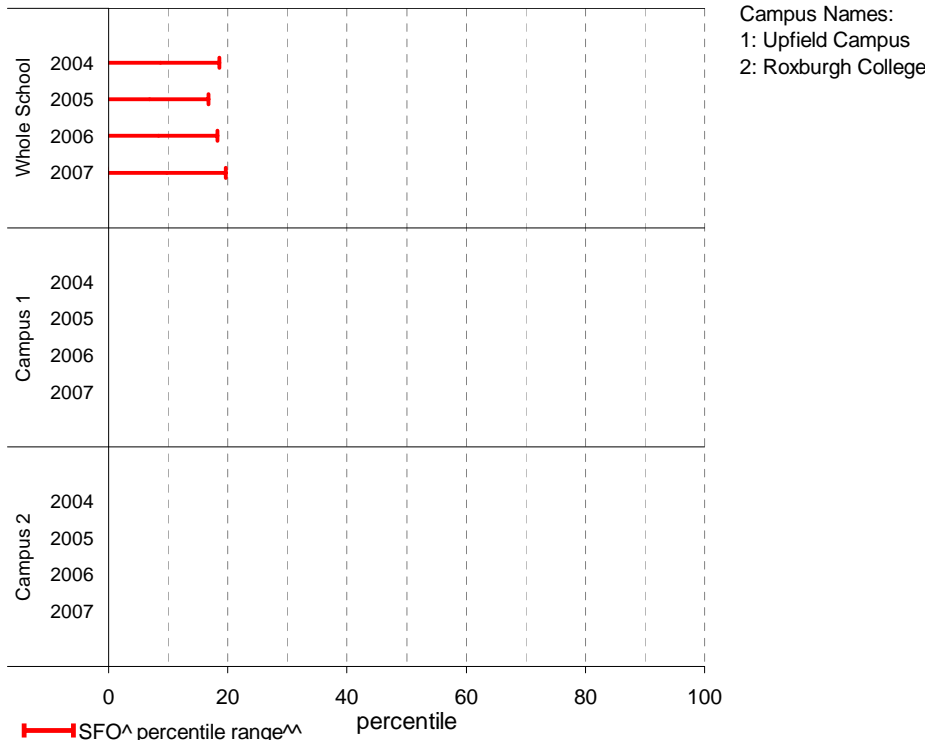
**Explanation:** The chart below plots the school's 2007 SFO (Student Family Occupation) density<sup>^</sup> and LBOTE (Language Background Other Than English) proportion\* against that of all government schools. This school is highlighted as a square on the chart.

	2000	2001	2002	2003	2004	2005	2006	2007
SFO density <sup>^</sup> :					0.77	0.75	0.74	0.72
LBOTE proportion*:	0.85	0.83	0.82	0.74	0.66	0.65	0.64	0.64

**School's 2007 SFO density and LBOTE proportion against that of all government schools**



**School's and Campus' SFO<sup>^</sup> percentile range<sup>^^</sup> over time**



Notes: <sup>^</sup> The higher the SFO density, the lower the SFO percentile, the lower the socio-economic status (SES).

<sup>^^</sup> The school's SFO percentile range shows the 20% of schools with an SFO Density most like this school.

\* From 2007, a student is LBOTE if either the student or one parent/guardian speaks a language other than English at home. Prior to 2007, a student is LBOTE if the student or one of the parents was born in a non-English speaking country.

# Teacher Judgments against the VELS - Year levels 7-10 combined

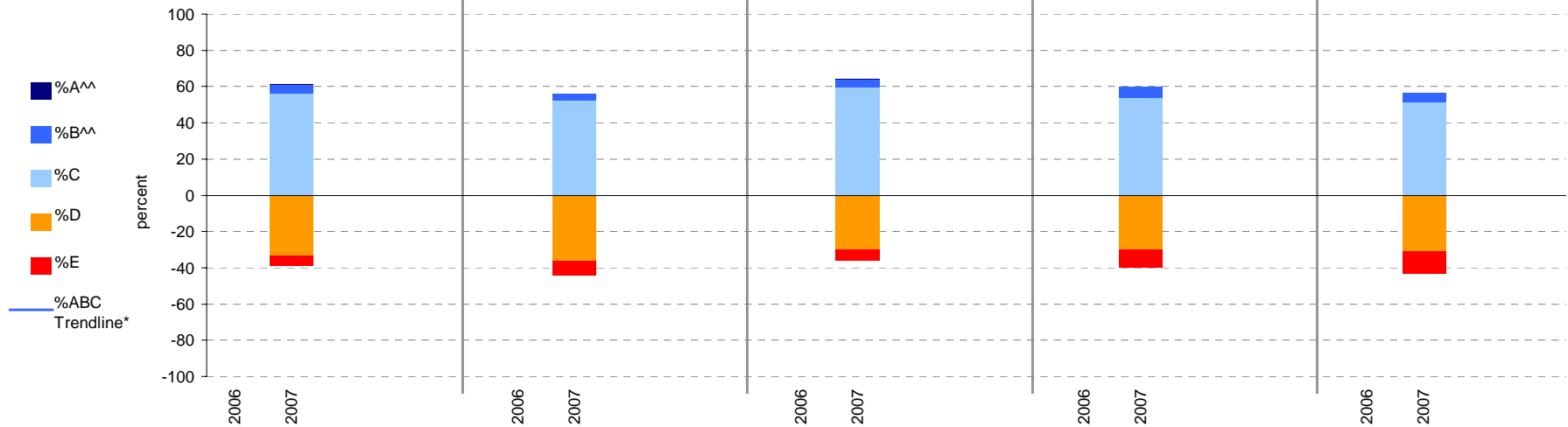
School no: 8407

School name: Roxburgh College

Source of data: Data retrieved electronically from CASES21.

Explanation: Teacher judgments of student progress against the VELS.

Year Levels:	Reading						Writing					Speaking & Listening					Measurement, Chance & Data					Structure									
	total students	% A^^	% B^^	% C	% D	% E	total students	% A^^	% B^^	% C	% D	% E	total students	% A^^	% B^^	% C	% D	% E	total students	% A^^	% B^^	% C	% D	% E	total students	% A^^	% B^^	% C	% D	% E	
7-10	2006																														
(combined)	2007	934	0	5	57	33	6	934	0	4	52	36	8	934	0	4	60	30	6	865	0	6	54	30	10	703	0	5	51	31	13



Notes: \* The school trendline is being trialled. It is only plotted when there is data for each calendar year.  
 ^^ The cutoff between grades A and B changed in 2007. Further information is available on the following website:  
<http://www.education.vic.gov.au/studentlearning/studentreports/schools/whatsnew.htm>.

# Teacher Judgments against the VELS - English (secondary)

School no: 8407

School name: Roxburgh College

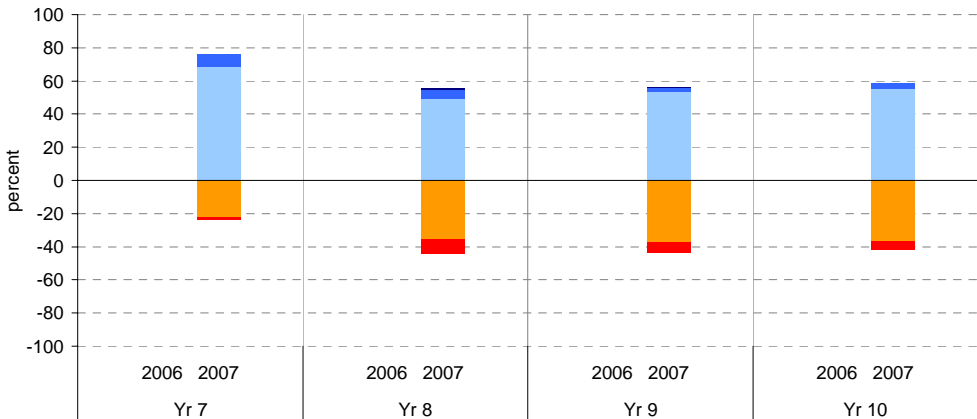
Source of data: Data retrieved electronically from CASES21.

Explanation: Teacher judgments of student progress against the VELS.

Notes: \* The school trendline is being trialled. It is only plotted when there is data for each calendar year.  
 \*\* In 2006, approx. 850 schools assessed their students against the 0.25 VELS scale. 2006 benchmarks are therefore based on a subset of schools. 2007 benchmarks will be calculated in August, when data from all schools has been submitted.  
 ^ Percentiles for 2007 will be calculated in August, when data from all schools has been submitted.  
 ^^ The cutoff between grades A and B changed in 2007. Further information is available on the following website: <http://www.education.vic.gov.au/studentlearning/studentreports/schools/whatsnew.htm>.

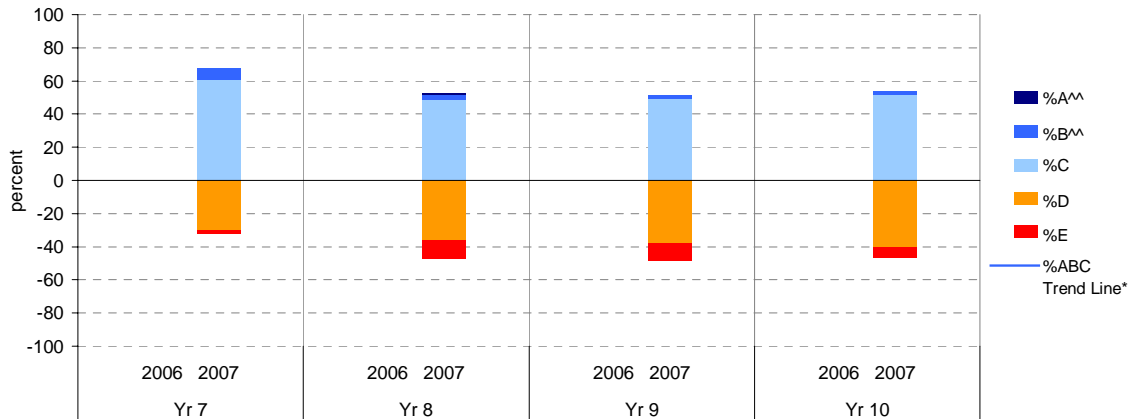
## Reading

	total students	% of students by grade					Mean Score	School State**
		A^	B^	C	D	E		
Yr 7	2006						4.32	
	2007	224	0	7	69	22	2	4.29
Yr 8	2006						4.78	
	2007	232	1	5	50	36	9	4.66



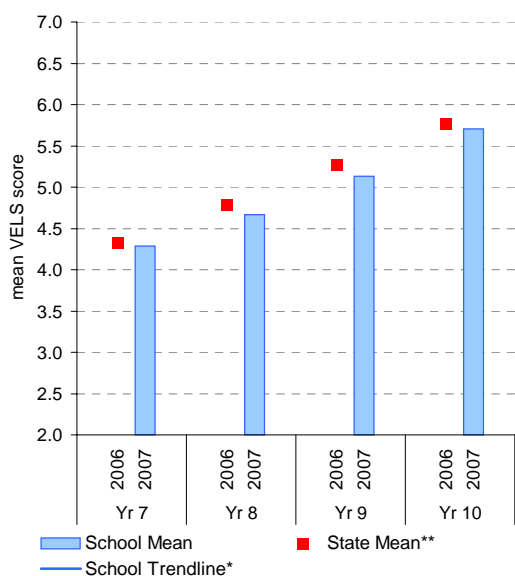
## Writing

	total students	% of students by grade					Mean Score	School State**
		A^	B^	C	D	E		
Yr 7	2006						4.28	
	2007	224	0	7	61	30	2	4.25
Yr 8	2006						4.75	
	2007	232	1	3	49	36	11	4.62

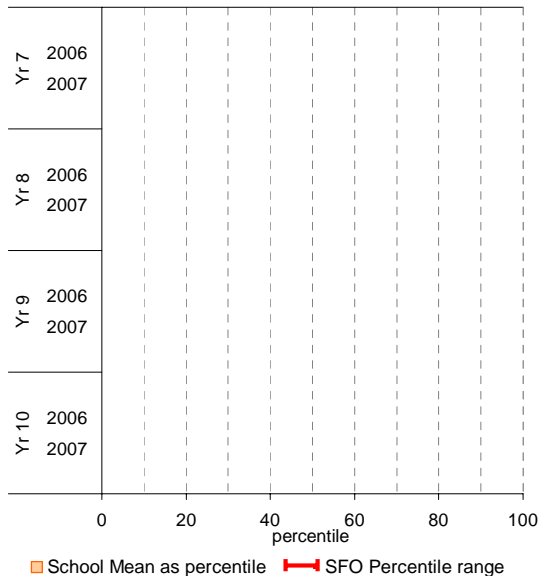


## Reading

School Mean against State Mean

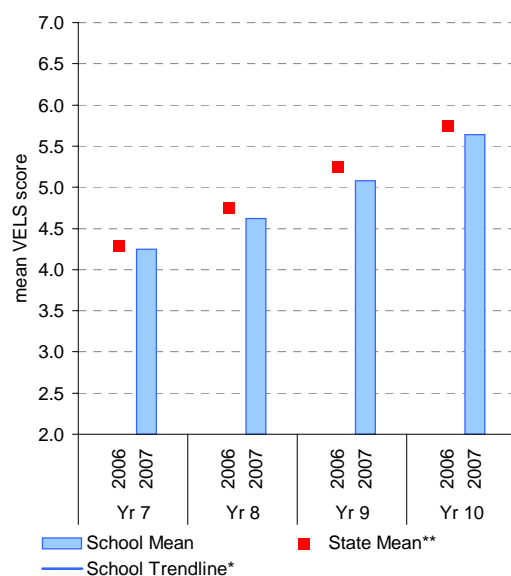


School Mean as percentile against SFO percentile range^

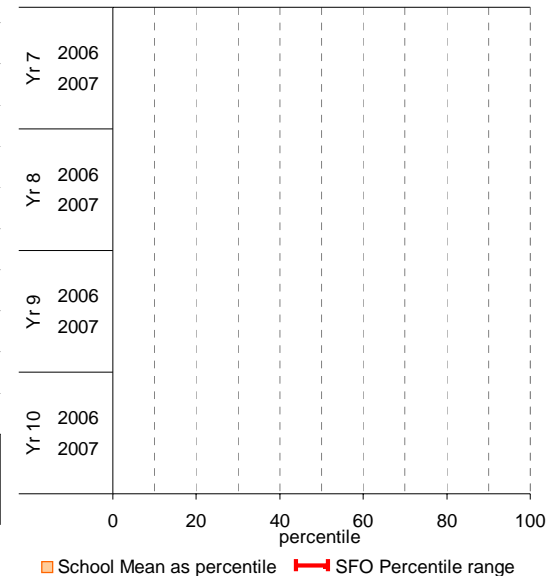


## Writing

School Mean against State Mean



School Mean as percentile against SFO percentile range^



# Teacher Judgments against the VELS - English (secondary)

School no: 8407

School name: Roxburgh College

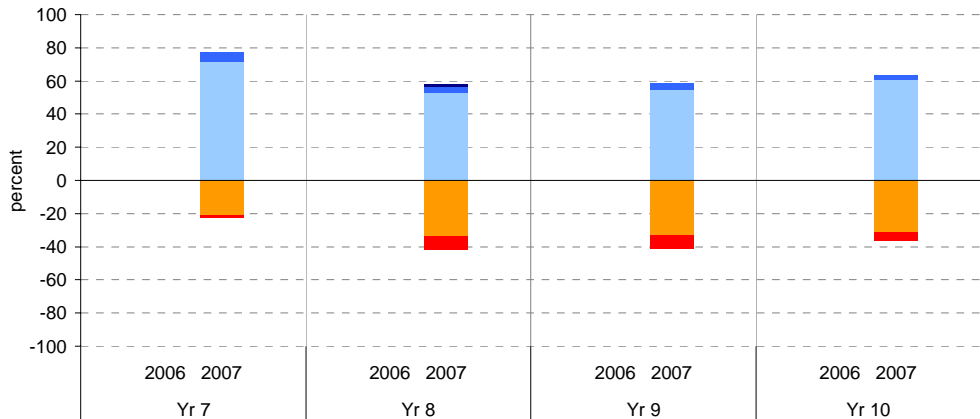
Source of data: Data retrieved electronically from CASES21.

Explanation: Teacher judgments of student progress against the VELS.

Notes: \* The school trendline is being trialled. It is only plotted when there is data for each calendar year.  
 \*\* In 2006, approx. 850 schools assessed their students against the 0.25 VELS scale. 2006 benchmarks are therefore based on a subset of schools. 2007 benchmarks will be calculated in August, when data from all schools has been submitted.  
 ^ Percentiles for 2007 will be calculated in August, when data from all schools has been submitted.  
 ^^ The cutoff between grades A and B changed in 2007. Further information is available on the following website: <http://www.education.vic.gov.au/studentlearning/studentreports/schools/whatsnew.htm>.

## Speaking and Listening

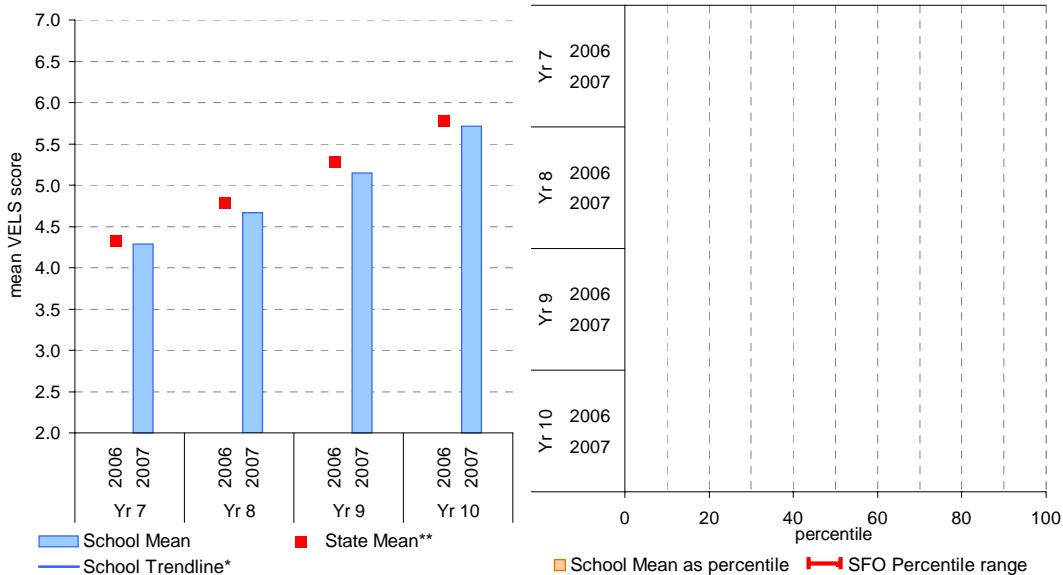
	total students	% of students by grade					Mean Score			total students	% of students by grade					Mean Score	
		A <sup>^</sup>	B <sup>^</sup>	C	D	E	School	State <sup>**</sup>			A <sup>^</sup>	B <sup>^</sup>	C	D	E	School	State <sup>**</sup>
Yr 7	2006						4.33		2006							5.28	
	2007	224	0	6	72	21	1	4.29	2007	271	0	4	55	33	8	5.15	
Yr 8	2006						4.79		2006							5.78	
	2007	232	1	3	53	34	8	4.66	2007	207	0	3	61	31	5	5.72	



## Speaking and Listening

School Mean against State Mean

School Mean as percentile against SFO percentile range<sup>^</sup>



# Teacher Judgments against the VELS - Mathematics (secondary)

School no: 8407

School name: Roxburgh College

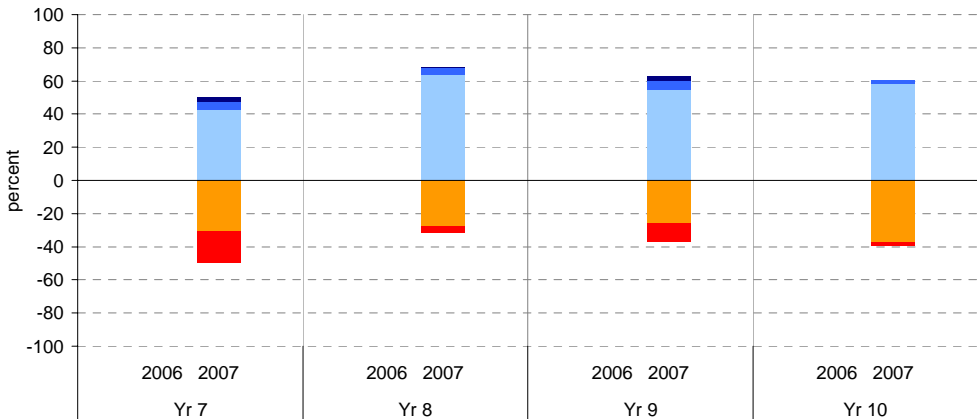
Source of data: Data retrieved electronically from CASES21.

Explanation: Teacher judgments of student progress against the VELS.

Notes: \* The school trendline is being trialled. It is only plotted when there is data for each calendar year.  
 \*\* In 2006, approx. 850 schools assessed their students against the 0.25 VELS scale. 2006 benchmarks are therefore based on a subset of schools. 2007 benchmarks will be calculated in August, when data from all schools has been submitted.  
 ^ Percentiles for 2007 will be calculated in August, when data from all schools has been submitted.  
 ^^ The cutoff between grades A and B changed in 2007. Further information is available on the following website: <http://www.education.vic.gov.au/studentlearning/studentreports/schools/whatsnew.htm>.

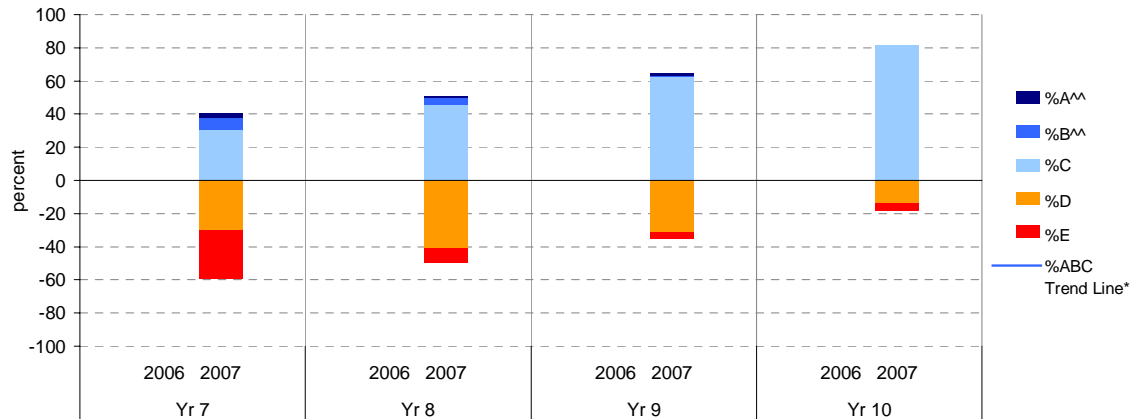
## Measurement, Chance and Data

	total students	% of students by grade					Mean Score	
		A <sup>^^</sup>	B <sup>^^</sup>	C	D	E	School	State <sup>**</sup>
Yr 7	2006						4.31	
	2007	221	3	5	43	31	19	4.09
Yr 8	2006						4.78	
	2007	162	1	4	64	28	4	4.74



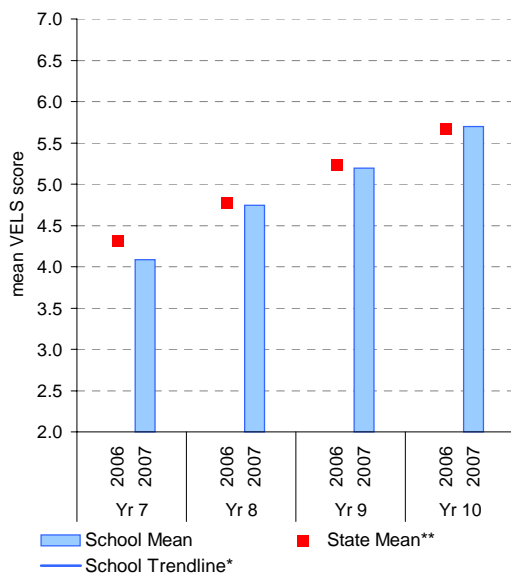
## Structure

	total students	% of students by grade					Mean Score	
		A <sup>^^</sup>	B <sup>^^</sup>	C	D	E	School	State <sup>**</sup>
Yr 7	2006						4.30	
	2007	199	3	7	31	31	29	4.01
Yr 8	2006						4.74	
	2007	137	1	1	62	31	4	5.24
Yr 9	2006						5.66	
	2007	206	0	2	58	37	2	5.70

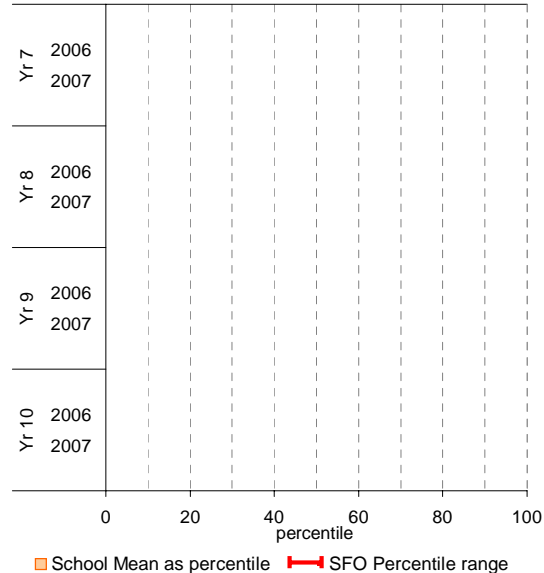


## Measurement, Chance and Data

### School Mean against State Mean

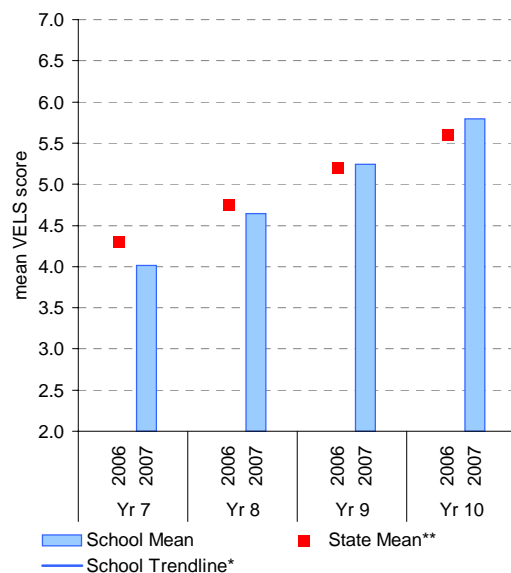


### School Mean as percentile against SFO percentile range<sup>^</sup>

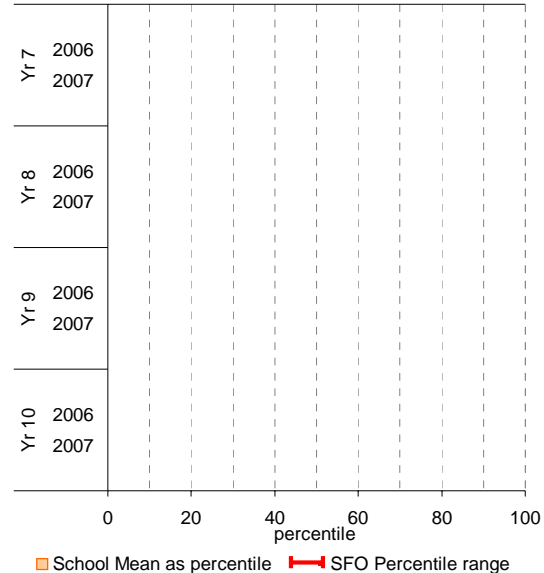


## Structure

### School Mean against State Mean



### School Mean as percentile against SFO percentile range<sup>^</sup>



# Teacher Judgments against the VELS - English (secondary)

**School no:** 8407  
**School name:** Roxburgh College  
**Source of data:** Data retrieved electronically from CASES21.  
**Explanation:** Teacher judgments of student progress against the VELS.

## Reading

Year Level	Year	Total <sup>1</sup>	Assessed <sup>2</sup>	Level 1			Level 2			Level 3			Level 4			Level 5			Level 6			Level 6E			School mean	State mean*	Difference between school and state mean*			
				0.00	0.50	1.00	1.25	1.50	1.75	2.00	2.25	2.50	2.75	3.00	3.25	3.50	3.75	4.00	4.25	4.50	4.75	5.00	5.25	5.50				5.75	6.00	6.25
yr7	2007	232	224								1	1	2	12	38	74	80	16									4.29			
yr7	2006																											4.32		
yr8	2007	244	232									1	5	14							11	2	1					4.66		
yr7	2005																											4.78		
yr8	2006																													
yr9	2007	292	271												6	4	8	32	69	88	57	6	1					5.13		
yr7	2004																													
yr8	2005																													
yr9	2006																											5.26		
yr10	2007	225	207													1	1	9				14	61	38	76	7	5.71			
yr8	2004																													
yr9	2005																													
yr10	2006																											5.77		
yr9	2004																													
yr10	2005																													
yr10	2004																													

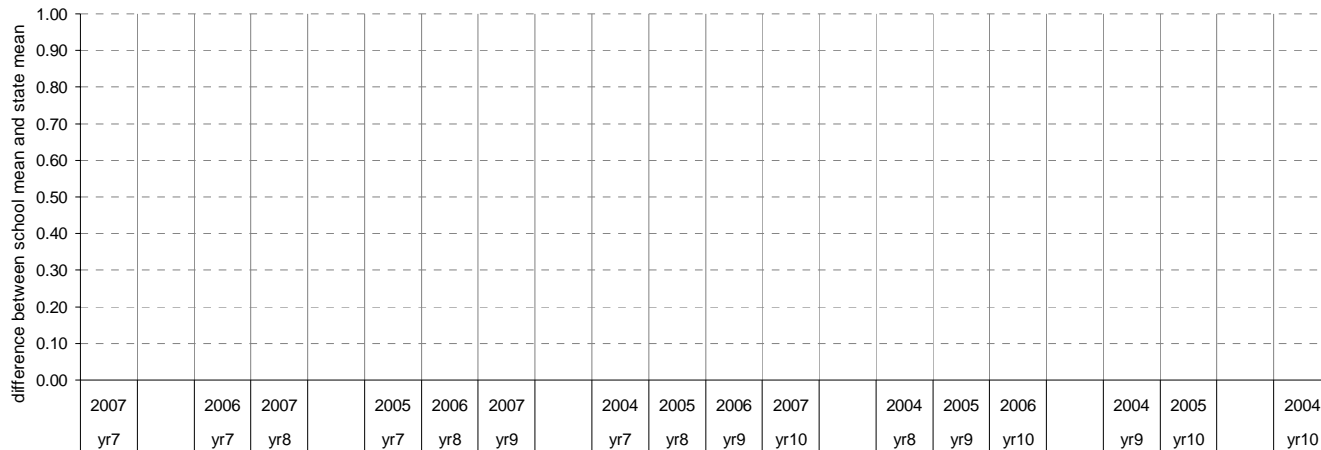
shading indicates a 'C' grade (at the expected standard) on the VELS scale.

<sup>1</sup> Students in group

<sup>2</sup> Total assessed

\* Note: In 2006, approx. 850 schools assessed their students against the 0.25 VELS scale. 2006 benchmarks are therefore based on a subset of schools. 2007 benchmarks will be calculated in August, when data from all schools has been submitted.

### Difference between school mean and state mean\*, by cohort group



# Teacher Judgments against the VELS - English (secondary)

**School no:** 8407  
**School name:** Roxburgh College  
**Source of data:** Data retrieved electronically from CASES21.  
**Explanation:** Teacher judgments of student progress against the VELS.

## Writing

Year Level	Year	Total <sup>1</sup>	Assessed <sup>2</sup>	Level 1			Level 2			Level 3			Level 4			Level 5			Level 6			Level 6E			School mean	State mean*	Difference between school and state mean*		
				0.00	0.50	1.00	1.25	1.50	1.75	2.00	2.25	2.50	2.75	3.00	3.25	3.50	3.75	4.00	4.25	4.50	4.75	5.00	5.25	5.50				5.75	6.00
yr7	2007	232	224								1	2	2	12	55	68	69	15								4.25			
yr7	2006																										4.28		
yr8	2007	244	232										1	7	18	23	61	57	56	7	2						4.62		
yr7	2005																												
yr8	2006																										4.75		
yr9	2007	292	271											1	10	3	14	34	70	83	50	6					5.08		
yr7	2004																												
yr8	2005																												
yr9	2006																										5.25		
yr10	2007	225	207												1	3	9	25	58	51	56	4					5.64		
yr8	2004																												
yr9	2005																												
yr10	2006																										5.75		
yr9	2004																												
yr10	2005																												
yr10	2004																												

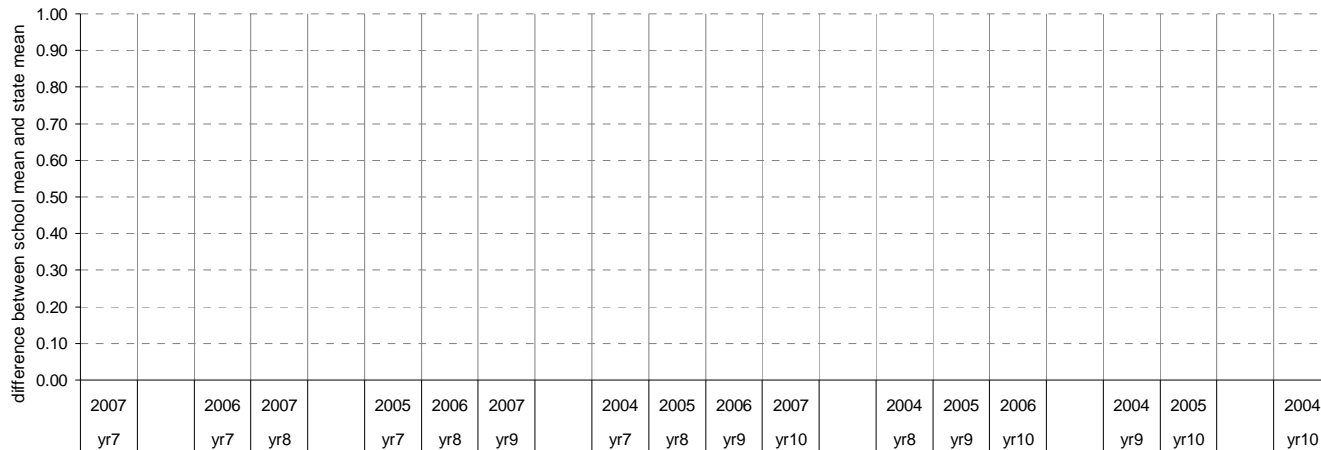
shading indicates a 'C' grade (at the expected standard) on the VELS scale.

<sup>1</sup> Students in group

<sup>2</sup> Total assessed

\* Note: In 2006, approx. 850 schools assessed their students against the 0.25 VELS scale. 2006 benchmarks are therefore based on a subset of schools. 2007 benchmarks will be calculated in August, when data from all schools has been submitted.

### Difference between school mean and state mean\*, by cohort group



# Teacher Judgments against the VELS - English (secondary)

**School no:** 8407  
**School name:** Roxburgh College  
**Source of data:** Data retrieved electronically from CASES21.  
**Explanation:** Teacher judgments of student progress against the VELS.

## Speaking and Listening

Year Level	Year	Total <sup>1</sup>	Assessed <sup>2</sup>	Level 1			Level 2			Level 3			Level 4			Level 5			Level 6			Level 6E			School mean	State mean*	Difference between school and state mean*			
				0.00	0.50	1.00	1.25	1.50	1.75	2.00	2.25	2.50	2.75	3.00	3.25	3.50	3.75	4.00	4.25	4.50	4.75	5.00	5.25	5.50				5.75	6.00	6.25
yr7	2007	232	224								1	1	1	14	33	78	83	13									4.29			
yr7	2006																											4.33		
yr8	2007	244	232									1	1	4	13	19	60	66	57	8	1	2						4.66		
yr7	2005																													
yr8	2006																											4.79		
yr9	2007	292	271												5	4	13	24	66	85	64	10						5.15		
yr7	2004																													
yr8	2005																													
yr9	2006																											5.28		
yr10	2007	225	207													1	1		9	5	59	59	67	6				5.72		
yr8	2004																													
yr9	2005																													
yr10	2006																											5.78		
yr9	2004																													
yr10	2005																													
yr10	2004																													

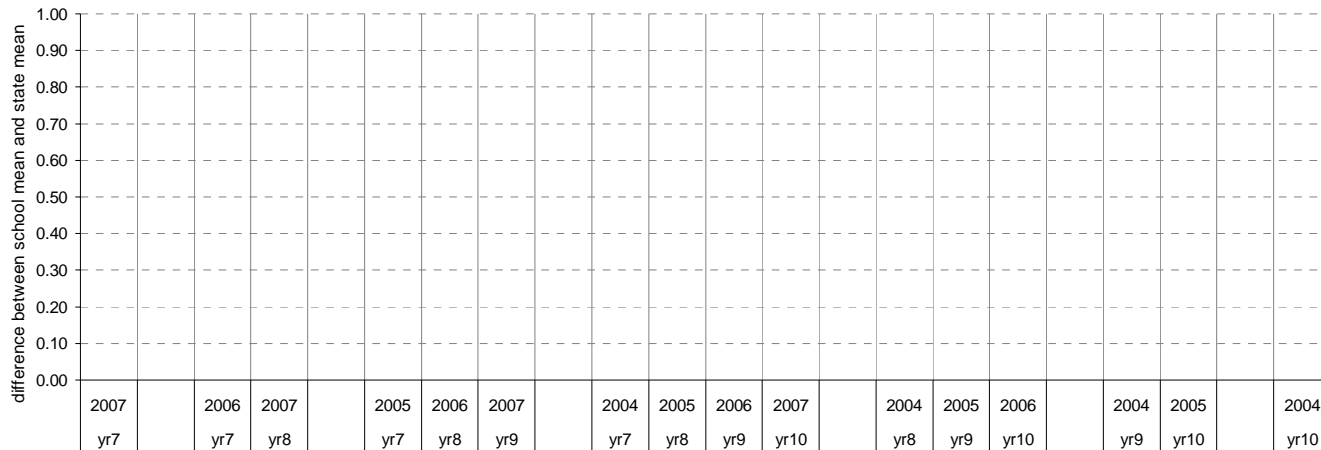
shading indicates a 'C' grade (at the expected standard) on the VELS scale.

<sup>1</sup> Students in group

<sup>2</sup> Total assessed

\* Note: In 2006, approx. 850 schools assessed their students against the 0.25 VELS scale. 2006 benchmarks are therefore based on a subset of schools. 2007 benchmarks will be calculated in August, when data from all schools has been submitted.

### Difference between school mean and state mean\*, by cohort group



# Teacher Judgments against the VELS - Mathematics (secondary)

School no: 8407  
 School name: Roxburgh College  
 Source of data: Data retrieved electronically from CASES21.  
 Explanation: Teacher judgments of student progress against the VELS.

## Measurement, Chance and Data

Year Level	Year	Total <sup>1</sup>	Assessed <sup>2</sup>	Level 1				Level 2				Level 3				Level 4				Level 5				Level 6				Level 6E			School mean	State mean*	Difference between school and state mean*				
				0.00	0.50	1.00	1.25	1.50	1.75	2.00	2.25	2.50	2.75	3.00	3.25	3.50	3.75	4.00	3.25	3.50	3.75	4.00	4.25	4.50	4.75	5.00	5.25	5.50	5.75	6.00				6.25	6.50	6.75	
yr7	2007	232	221												3	4	35	37	31	36	58	11	6										4.09				
yr7	2006																																		4.31		
yr8	2007	244	162													1	5			9	36	51	52	7	1								4.74				
yr7	2005																																		4.78		
yr8	2006																																				
yr9	2007	292	276														1	1	7	22	14	57	79	71	16	8								5.19			
yr7	2004																																				
yr8	2005																																				
yr9	2006																																			5.24	
yr10	2007	223	206																		2	3	36	41	39	80	5							5.70			
yr8	2004																																				
yr9	2005																																				
yr10	2006																																			5.66	
yr9	2004																																				
yr10	2005																																				
yr10	2004																																				

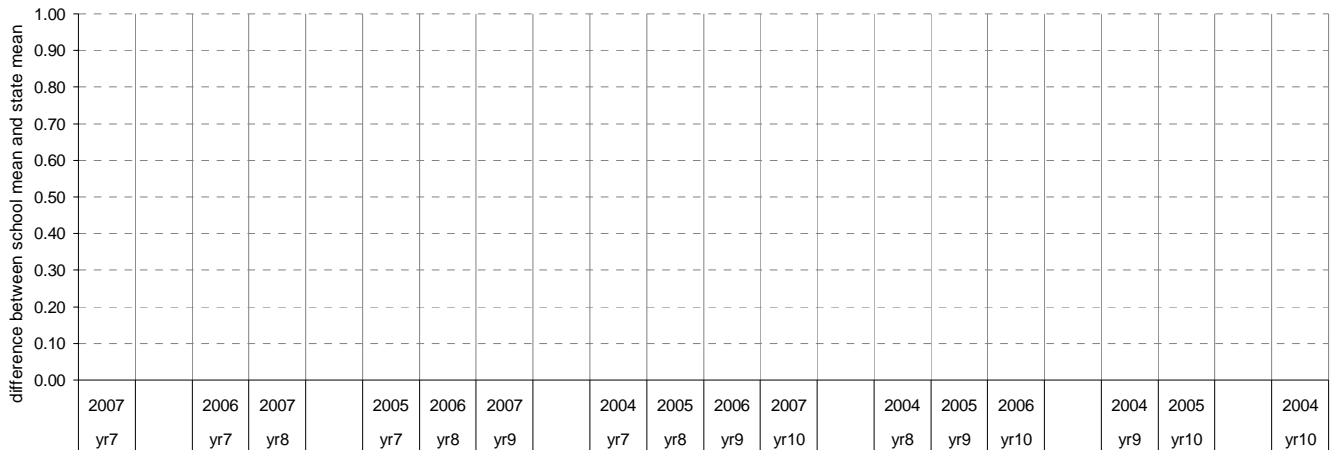
shading indicates a 'C' grade (at the expected standard) on the VELS scale.

<sup>1</sup> Students in group

<sup>2</sup> Total assessed

\* Note: In 2006, approx. 850 schools assessed their students against the 0.25 VELS scale. 2006 benchmarks are therefore based on a subset of schools. 2007 benchmarks will be calculated in August, when data from all schools has been submitted.

### Difference between school mean and state mean\*, by cohort group



# Teacher Judgments against the VELS - Mathematics (secondary)

**School no:** 8407  
**School name:** Roxburgh College  
**Source of data:** Data retrieved electronically from CASES21.  
**Explanation:** Teacher judgments of student progress against the VELS.

## Structure

Year Level	Year	Total <sup>1</sup>	Assessed <sup>2</sup>	Level 1				Level 2				Level 3				Level 4				Level 5				Level 6				Level 6E			School mean	State mean*	Difference between school and state mean*				
				0.00	0.50	1.00	1.25	1.50	1.75	2.00	2.25	2.50	2.75	3.00	3.25	3.50	3.75	4.00	3.25	3.50	3.75	4.00	4.25	4.50	4.75	5.00	5.25	5.50	5.75	6.00				6.25	6.50	6.75	
yr7	2007	232	199											1				23	33	17	44	23	38	14	6								4.01				
yr7	2006																																		4.30		
yr8	2007	244	232														1		19				25	70	43	63	10	1						4.65			
yr7	2005																																		4.74		
yr8	2006																																			4.74	
yr9	2007	292	137																				5		8	35	30	55	2	2					5.24		
yr7	2004																																				
yr8	2005																																				
yr9	2006																																				5.21
yr10	2007	223	135																					2	4	6	13	42	68							5.79	
yr8	2004																																				
yr9	2005																																				
yr10	2006																																				5.60
yr9	2004																																				
yr10	2005																																				
yr10	2004																																				

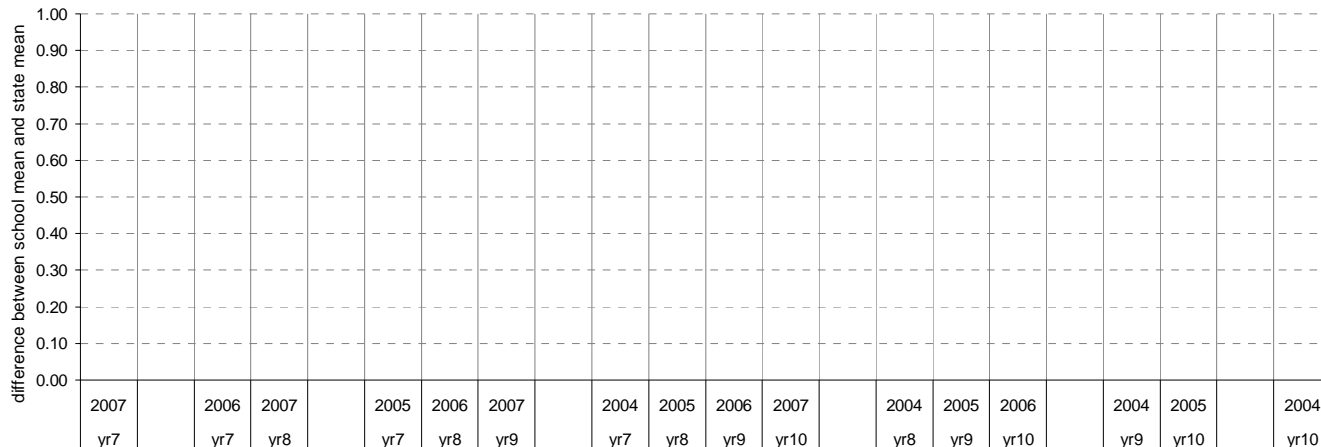
shading indicates a 'C' grade (at the expected standard) on the VELS scale.

<sup>1</sup> Students in group

<sup>2</sup> Total assessed

\* Note: In 2006, approx. 850 schools assessed their students against the 0.25 VELS scale. 2006 benchmarks are therefore based on a subset of schools. 2007 benchmarks will be calculated in August, when data from all schools has been submitted.

## Difference between school mean and state mean\*, by cohort group



# AIM Year 7 and 9: Reading

School no: 8407

School name: Roxburgh College

Source of data: Victorian Curriculum and Assessment Authority.

Explanation: The Achievement Improvement Monitor (AIM) is a statewide assessment program conducted each year for students in Years 3, 5, 7 and 9. For more detailed AIM data, refer to the AIM Data Service website at <http://aimds.vcaa.vic.edu.au>.

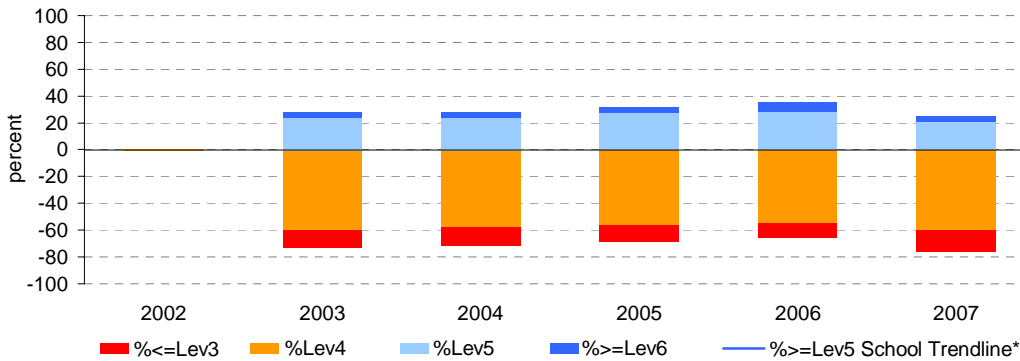
Notes: \* The school trendline is being trialled. It is only plotted when there is data for each calendar year.

\*\* % student participation = (students who participated in AIM / Feb enrolments) \* 100

## Year 7

Year	student participation		% of students by VELS level							Mean CSF / VELS Score	
	(n)	(%)**	Lev1	Lev2	Lev3	Lev4	Lev5	Lev6	Lev6E	School	State
2002										3.7	4.1
2003	209	84	0	0	13	60	23	4	0	3.7	4.1
2004	217	84	0	0	14	58	24	5	0	3.7	4.2
2005	228	83	0	0	12	57	28	4	0	3.8	4.2
2006	209	87	0	0	11	55	28	7	0	3.8	4.2
2007	193	80	0	0	16	60	21	4	0	3.6	4.1

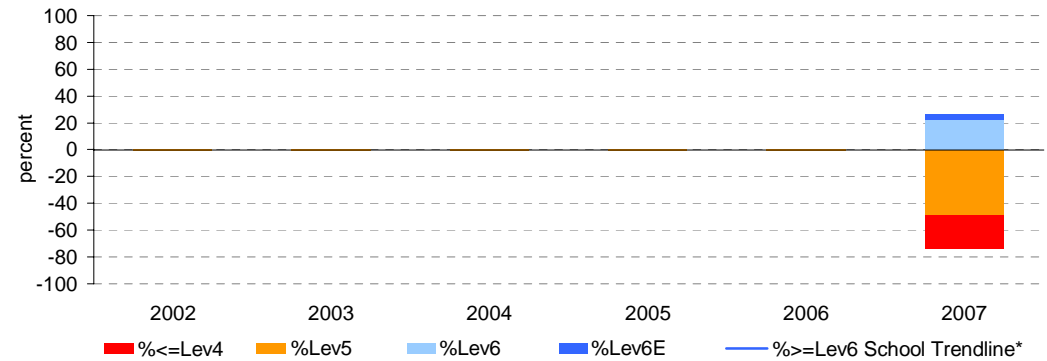
### Proportion of students by VELS level



## Year 9

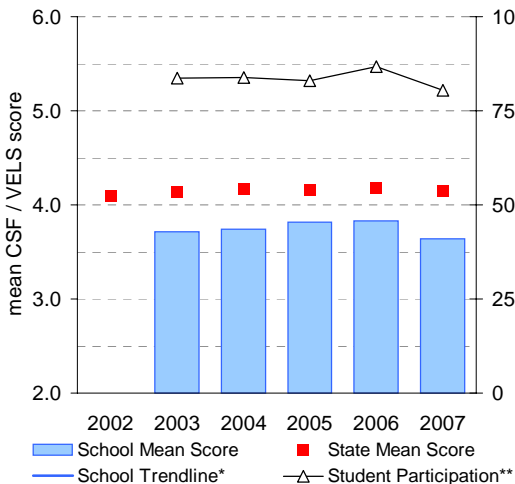
Year	student participation		% of students by VELS level							Mean CSF / VELS Score	
	(n)	(%)**	Lev1	Lev2	Lev3	Lev4	Lev5	Lev6	Lev6E	School	State
2002											
2003											
2004											
2005											
2006											5.1
2007	243	83	0	0	0	25	49	23	4	4.6	5.1

### Proportion of students by VELS level

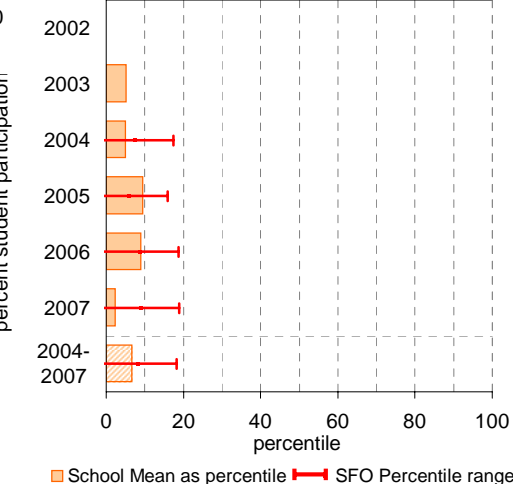


## Year 7

### School Mean against State Mean, including Participation

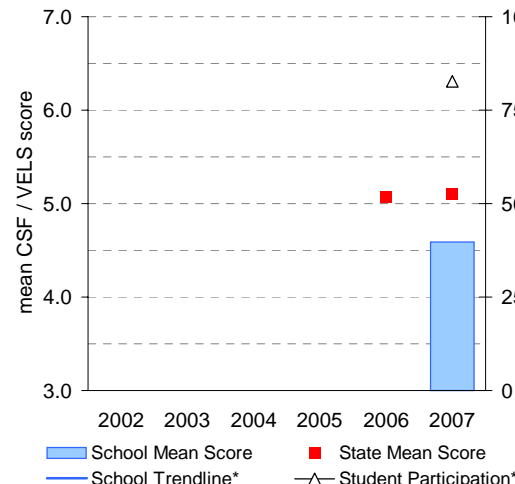


### School Mean as percentile against SFO percentile range

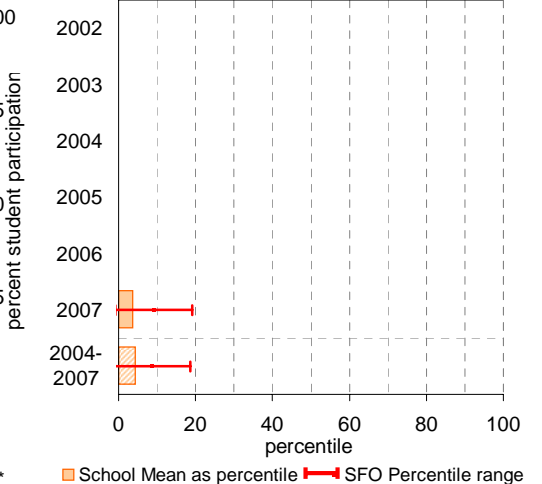


## Year 9

### School Mean against State Mean, including Participation



### School Mean as percentile against SFO percentile range



# AIM Year 7 and 9: Mathematics

School no: 8407

School name: Roxburgh College

Source of data: Victorian Curriculum and Assessment Authority.

Explanation: The Achievement Improvement Monitor (AIM) is a statewide assessment program conducted each year for students in Years 3, 5, 7 and 9. For more detailed AIM data, refer to the AIM Data Service website at <http://aimds.vcaa.vic.edu.au>.

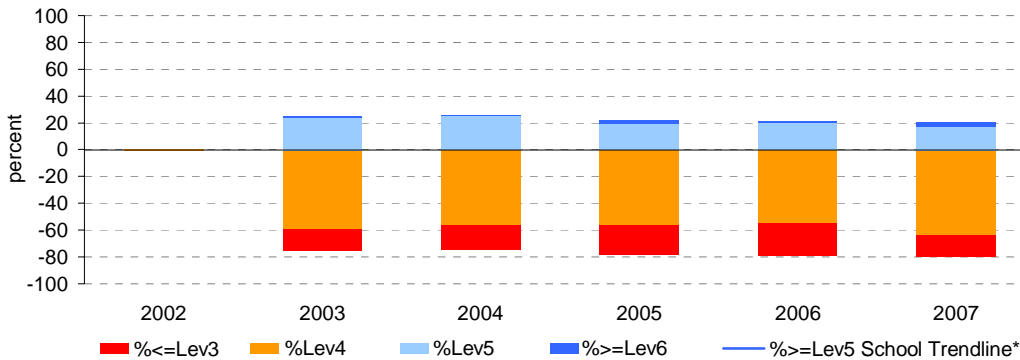
Notes: \* The school trendline is being trialled. It is only plotted when there is data for each calendar year.

\*\* % student participation = (students who participated in AIM / Feb enrolments) \* 100

## Year 7

	student participation		% of students by VELS level							Mean CSF / VELS Score	
	(n)	(%)**	Lev1	Lev2	Lev3	Lev4	Lev5	Lev6	Lev6E	School	State
2002										3.6	4.1
2003	218	87	0	0	16	59	23	1	0	3.6	4.0
2004	212	82	0	0	18	56	25	0	0	3.6	4.0
2005	239	87	0	0	22	56	19	3	0	3.6	4.0
2006	215	89	0	0	24	54	20	1	0	3.5	4.0
2007	188	78	0	0	15	64	17	3	0	3.6	4.1

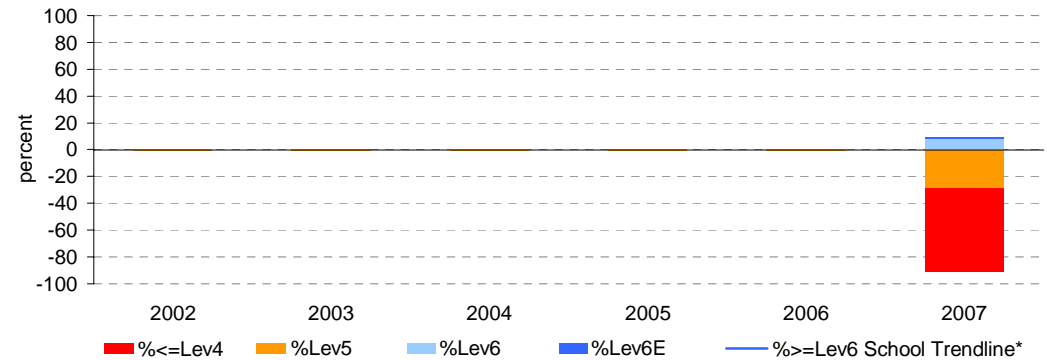
### Proportion of students by VELS level



## Year 9

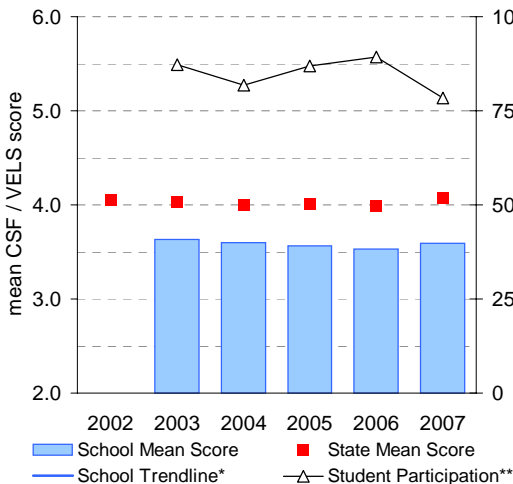
	student participation		% of students by VELS level							Mean CSF / VELS Score	
	(n)	(%)**	Lev1	Lev2	Lev3	Lev4	Lev5	Lev6	Lev6E	School	State
2002											
2003											
2004											
2005											
2006											4.8
2007	249	85	0	0	0	62	29	8	1	4.1	4.8

### Proportion of students by VELS level

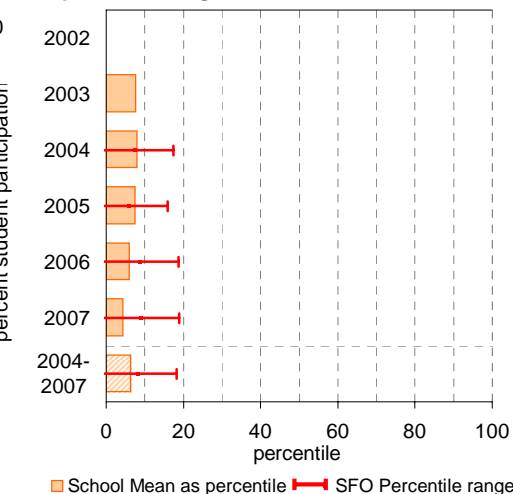


## Year 7

### School Mean against State Mean, including Participation

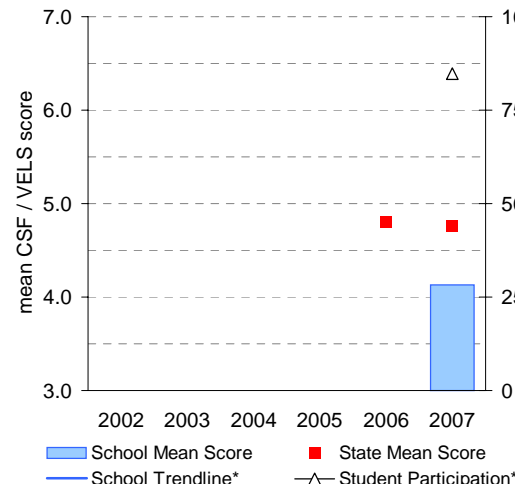


### School Mean as percentile against SFO percentile range

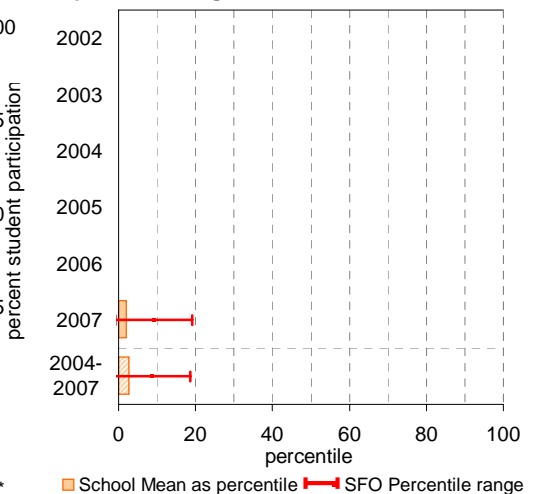


## Year 9

### School Mean against State Mean, including Participation



### School Mean as percentile against SFO percentile range



# VCE

**School no:** 8407

**School name:** Roxburgh College

**Explanation:** Only 2007 studies, which at least 1 student completed, are included.

**Source of data:** Victorian Curriculum and Assessment Authority.

Notes:	2003		2004		2005		2006		2007	
	No. of students	school mean	No. of students	school mean	No. of students	school mean	No. of students	school mean	No. of students	school mean
- After allstudy, English, Further Maths and Maths Methods, studies are listed in descending order of the number of students in the latest year.										
- From 2005, VET study scores are included.										
- From 2005, data is based on 'reported' study scores, not 'achieved' study scores.										
allstudy		24.3		24.3		24.1		24.9		23.7
English EN01	50	25.4	45	26.2	56	25.2	68	25.9	95	23.8
Further Mathematics MA07	9	21.9	16	18.1	10	21.8	36	23.4	36	23.9
Mathematical Methods MA08	19	23.1	11	22.4	18	20.5	23	23.2	18	20.5
Information Technology (VCE VET) IN21									41	28.0
Business Management BM03	21	24.7	24	23.6	32	24.2	45	25.1	40	24.8
Psychology PY03	21	20.5	18	22.1	14	19.9	17	25.9	32	22.5
Legal Studies LS03	20	21.2	24	23.6	16	20.5	21	25.9	27	21.5
Health & Human Dev. HH03	22	22.7			9	27.0	15	25.6	24	21.6
Turkish LO29	19	31.5	19	29.5	23	28.9	16	28.4	24	26.5
Drama DR03									19	23.7
International Studies IS03									17	23.2
Accounting AC03	5	25.0			14	22.1	12	30.2	16	22.4
Biology BI03	11	24.7	11	20.5	10	25.0	15	23.1	15	20.5
Multimedia (VCE VET) MU02					14	24.8	9	23.1	15	23.5
Visual Communication & Design VC03	20	23.4	16	23.8	18	23.3	16	20.4	15	21.6
Art AR03	1	31.0							14	23.4
Studio Arts SA03	7	26.0	12	29.3	13	25.4	1	30.0	13	25.4
Hospitality (Food & Bev.) (VCE VET) HS06					6	23.0	12	22.7	10	23.4
Music (VCE VET) MI07									10	27.1
Electrotechnology ET06							5	22.0	8	22.8
Chemistry CH03	9	23.9	2	17.5	7	23.6	6	23.7	6	18.7
English ESL EN09	7	30.0	4	26.8	4	24.0	3	35.3	6	22.0
Specialist Mathematics MA09	1	24.0					2	29.0	5	19.4
Sport & Rec (Outdoor) (VCE VET) SR19									5	22.2
Arabic LO02									2	33.0
Literature LI01			1	18.0	1	17.0	10	23.8	2	24.5
Furnishing FN08									1	16.0
Punjabi LO49									1	32.0
Tamil LO43									1	23.0

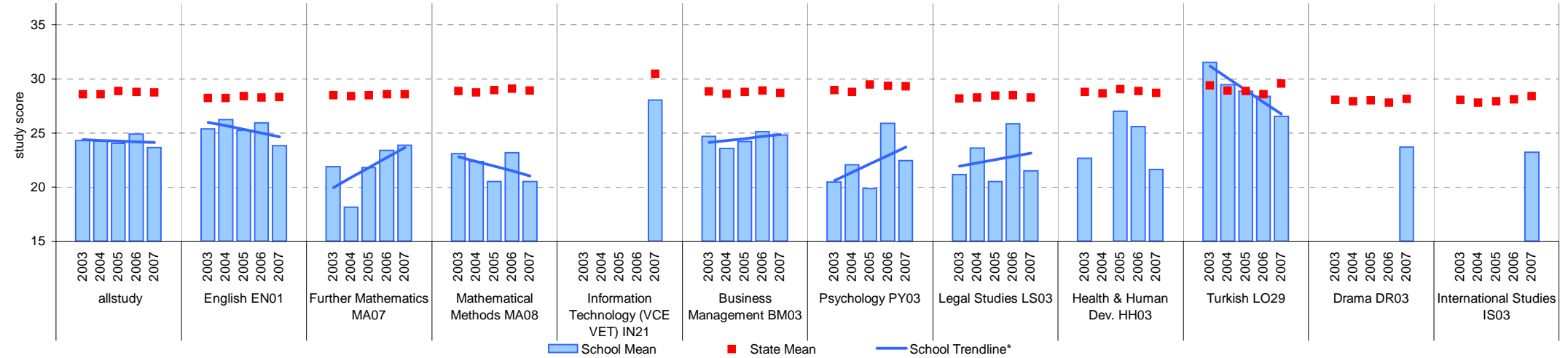
# VCE

School no: 8407

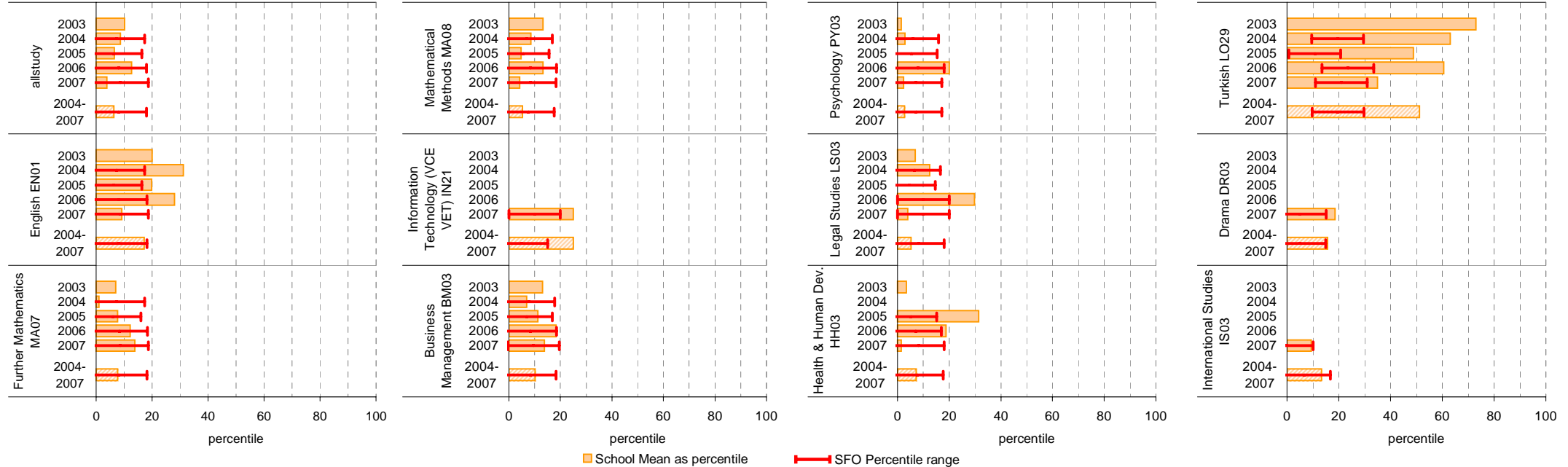
School name: Roxburgh College

Source of data: Victorian Curriculum and Assessment Authority.

## School Mean against State Mean



## School Mean as percentile against SFO percentile range



# VCE (cont'd)

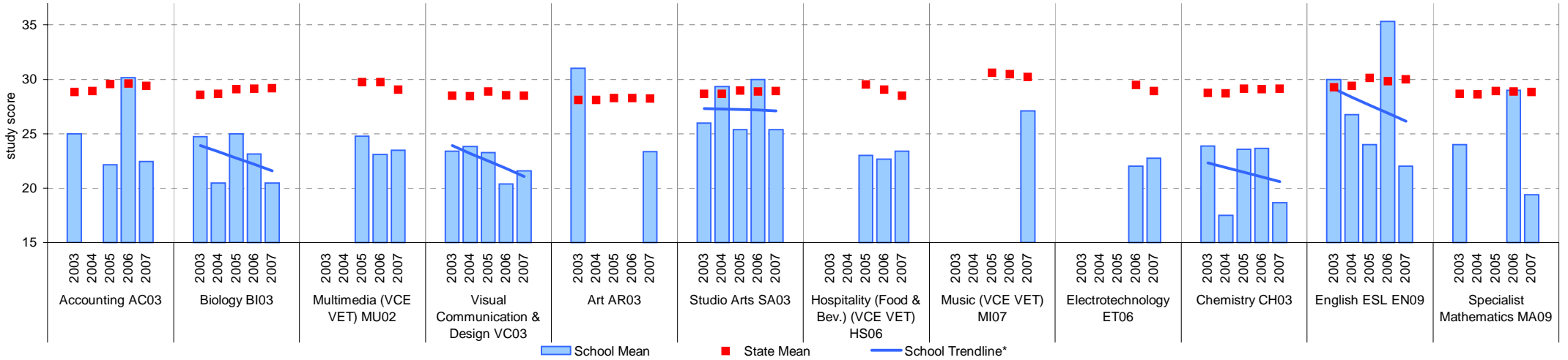
School no: 8407

School name: Roxburgh College

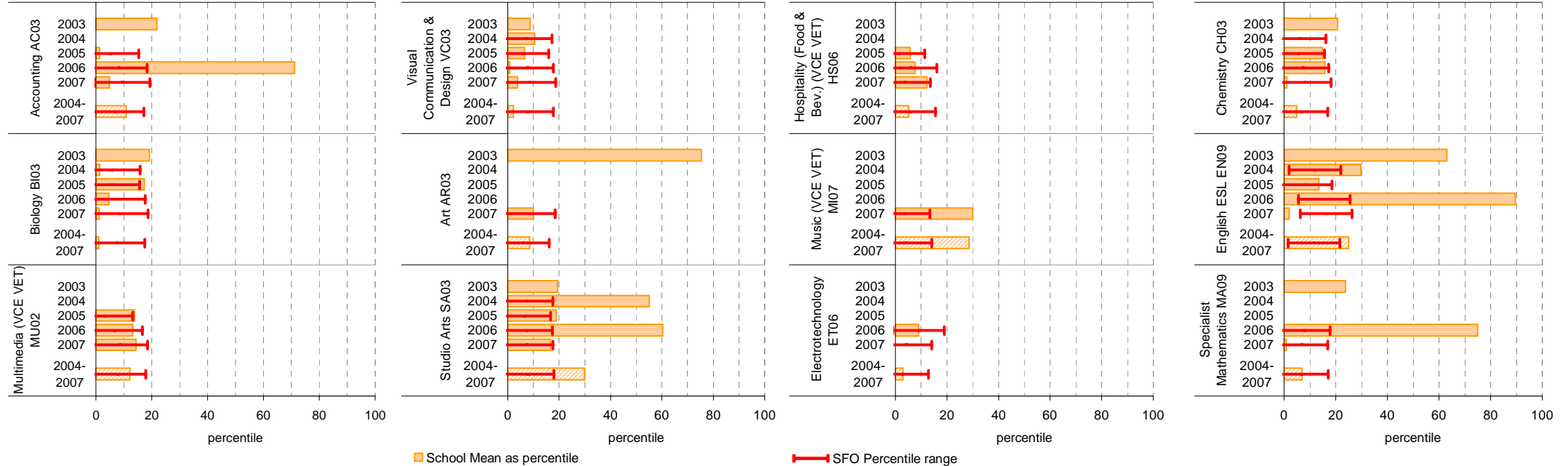
Source of data: Victorian Curriculum and Assessment Authority.

School Mean against State Mean

- Notes:
- \* The school trendline is being trialled. It is only plotted when there is data for each calendar year.
  - After allstudy, EN01, MA07 and MA08, the remaining studies are charted in order of the number of students who completed that study in 2007, from highest to lowest.
  - From 2005, VET study scores are included.
  - From 2005, data is based on 'reported' study scores, not the 'achieved' study scores.



## School Mean as percentile against SFO percentile range



# VCE (cont'd)

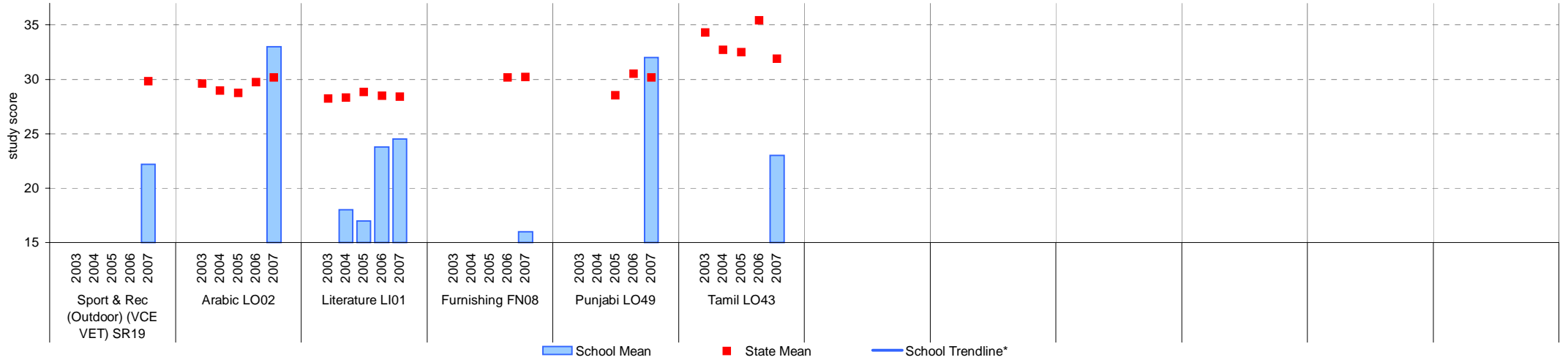
School no: 8407

School name: Roxburgh College

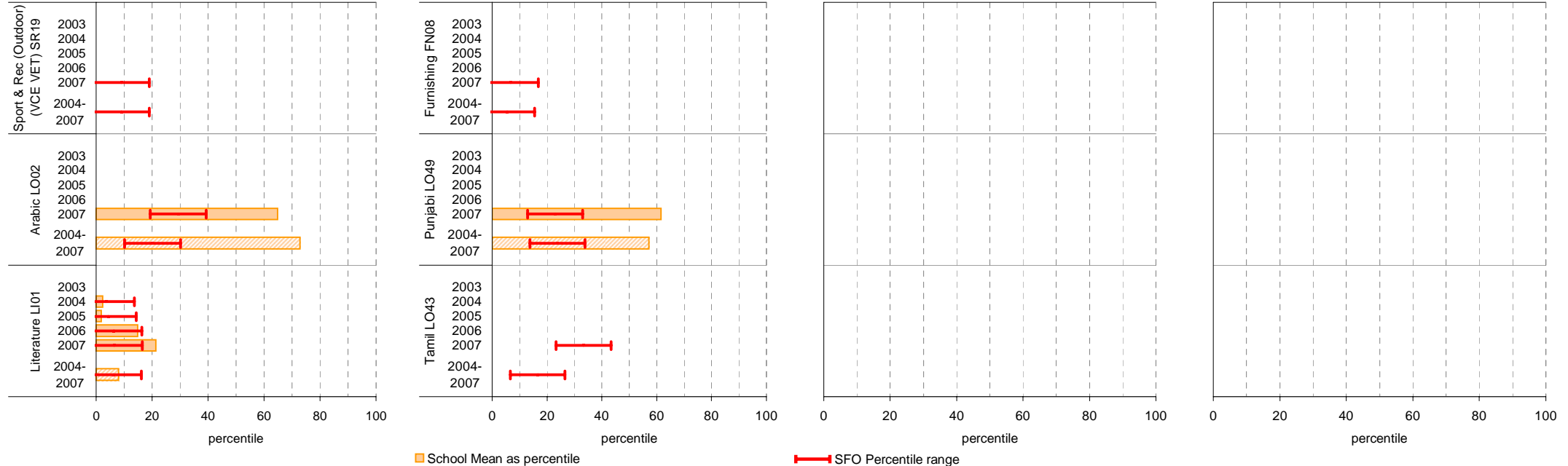
Source of data: Victorian Curriculum and Assessment Authority.

School Mean against State Mean

- Notes:
- \* The school trendline is being trialled. It is only plotted when there is data for each calendar year.
  - After allstudy, EN01, MA07 and MA08, the remaining studies are charted in order of the number of students who completed that study in 2007, from highest to lowest.
  - From 2005, VET study scores are included.
  - From 2005, data is based on 'reported' study scores, not the 'achieved' study scores.



## School Mean as percentile against SFO percentile range



# VET

**School no:** 8407  
**School name:** Roxburgh College  
**Source of data:** Victorian Curriculum and Assessment Authority.

Notes: \* - The school trendline is being trialled. It is only plotted when there is data for each calendar year.

1 - UOC = Unit(s) of Competence.

2 - % students based on yr10, 11 & 12 August enrolments.

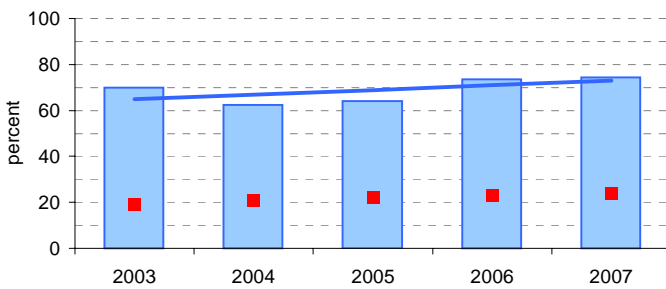
3 - Only includes students undertaking at least 1 UOC.

More detailed information is available on the VASS system provided by VCAA.

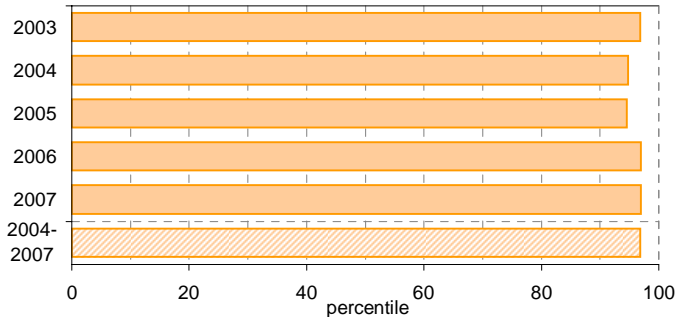
Participation						Completion			
School					State		School		State
Year	Level	No. students undertaking at least 1 UOC <sup>1</sup>	% students <sup>2</sup> undertaking at least 1 UOC <sup>1</sup>	Avg no. UOCs <sup>1</sup> undertaken per student <sup>3</sup>	% students <sup>2</sup> undertaking at least 1 UOC <sup>1</sup>	Avg no. UOCs <sup>1</sup> undertaken per student <sup>3</sup>	No. UOCs <sup>1</sup> with satisfactory result	% UOCs <sup>1</sup> with satisfactory result	% UOCs <sup>1</sup> with satisfactory result
2003	10	61	61	3.2	18.8	11.8	47	24.5	73.5
	11	71	84.5	19.2			1144	84.1	
	12	50	65.1	8.6			409	95.6	
	10-12	182	69.8	10.9			1600	80.8	
2004	10	43	32.6	3	20.7	11.9	114	88.4	71.3
	11	83	91.2	17.5			1329	91.8	
	12	50	84.8	10.8			470	87.4	
	10-12	176	62.4	12			1913	90.5	
2005	10	73	39.5	3.6	22.3	11.9	188	71.8	72.6
	11	122	93.9	22.4			2171	79.5	
	12	56	73.7	14.2			742	93.6	
	10-12	251	64.2	15.1			3101	81.9	
2006	10	152	59.1	4.4	23.0	12.0	216	32.5	75.6
	11	168	97.1	23.4			3085	78.3	
	12	76	70.4	16.9			1091	85	
	10-12	396	73.6	14.9			4392	74.6	
2007	10	137	60.8	8.9	23.8	11.7	1113	91.1	76.4
	11	194	82.2	21			3083	75.6	
	12	114	83.2	13.3			1235	81.6	
	10-12	445	74.4	15.3			5431	79.7	

## Participation - % Yr10-12 students<sup>2</sup> undertaking at least 1 UOC<sup>1</sup>

### School against State

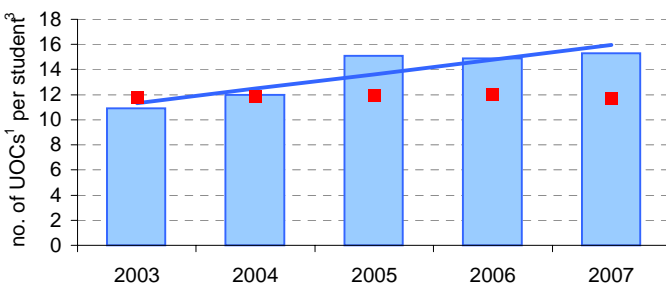


### School as percentile

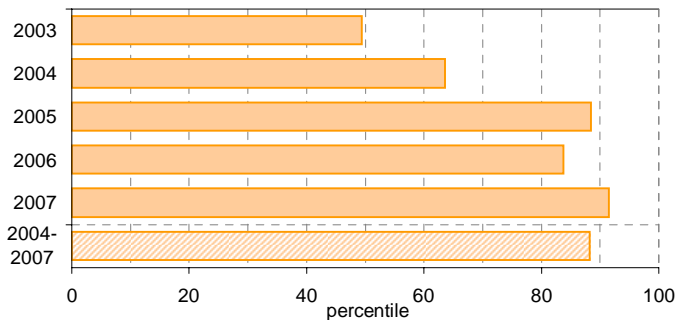


## Avg no. UOCs<sup>1</sup> undertaken per student<sup>3</sup>

### School Mean against State Mean

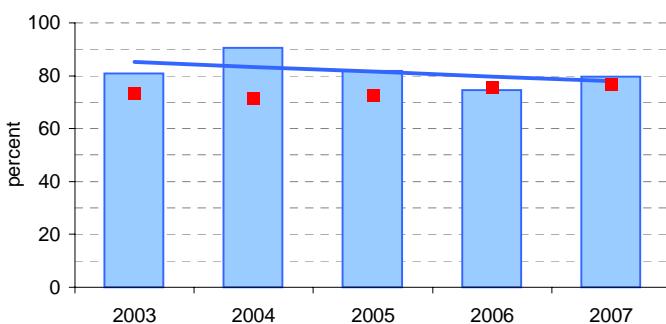


### School Mean as percentile

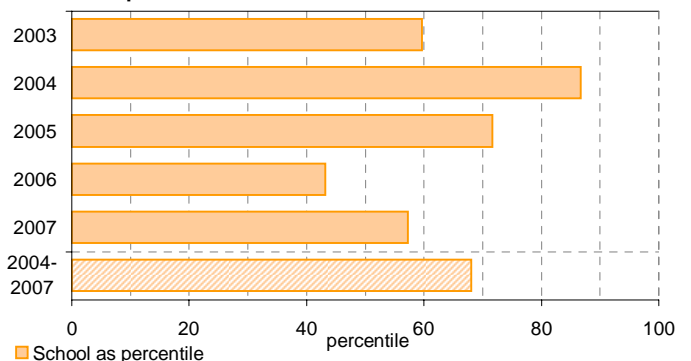


## Completion - % UOCs<sup>1</sup> with satisfactory result

### School against State



### School as percentile



# VCAL

**School no:** 8407  
**School name:** Roxburgh College  
**Explanation:**

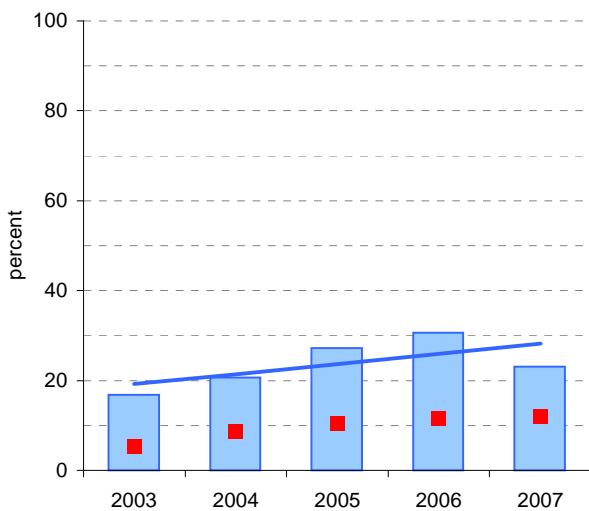
'No. of VCAL credits undertaken' is calculated by summing the number of credits undertaken by each VCAL student across all VCAL students.  
 The data contained in this page is for all VCAL strands and levels combined.

**Source of data:** Victorian Curriculum and Assessment Authority.  
 More detailed information is available on the VASS system provided by VCAA.

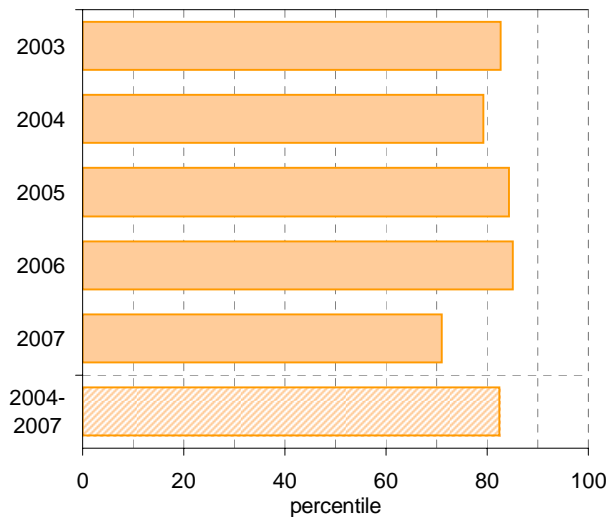
Notes: \* - The school trendline is being trialled. It is only plotted when there is data for each calendar year.  
 1 - No. and % students based on yr11 & 12 August enrolments.

Participation						Completion		
School					State	School		State
Year	Year Level	No. students <sup>1</sup>	No. students undertaking VCAL	% students <sup>1</sup> undertaking VCAL	% students <sup>1</sup> undertaking VCAL	No. VCAL unit credits undertaken	% satisfactory completion of VCAL credits	% satisfactory completion of VCAL credits
2003	11-12	160.8	27	16.8	5.2	54	88.9	73.6
2004	11-12	150	31	20.7	8.6	147	76.2	70.4
2005	11-12	206	56	27.2	10.4	287	80.8	72.9
2006	11-12	281	86	30.6	11.5	510	78.0	77.7
2007	11-12	373	86	23.1	12.0	507	80.1	76.5

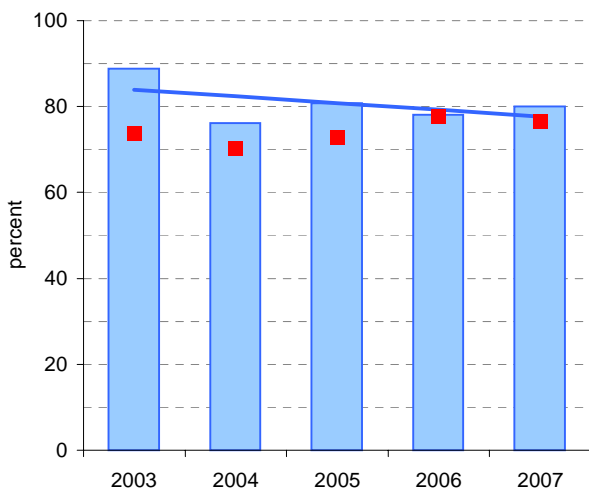
**Participation - % Yr11-12 students<sup>1</sup> undertaking VCAL School against State**



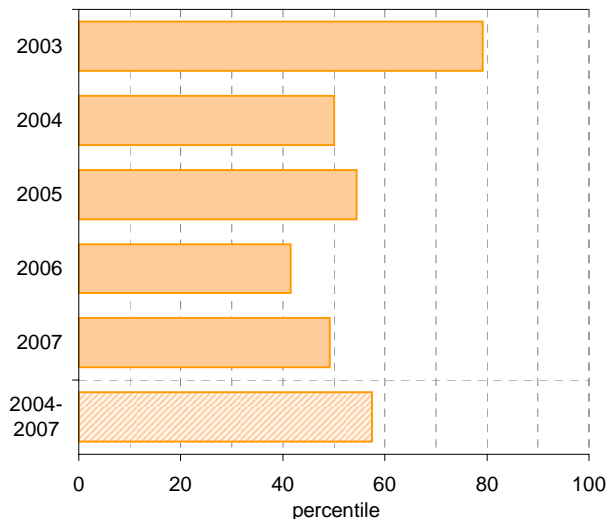
**School as percentile**



**Completion - % satisfactory completion of VCAL credits School against State**



**School as percentile**



■ School   
 ■ State Mean   
 — School Trendline\*   
  School as percentile

# Teacher Assessment of Student Progress (PSD students)

**School no:** 8407

**School name:** Roxburgh College

**Explanation:** Teachers assess their students' progress against the 8 VELs Domains / CSF KLAs using a 6-point scale (students in special schools and those who cannot be assessed against the VELs / CSF).

**Source of data:** Data transmitted from school to DEECD via an online web-form.

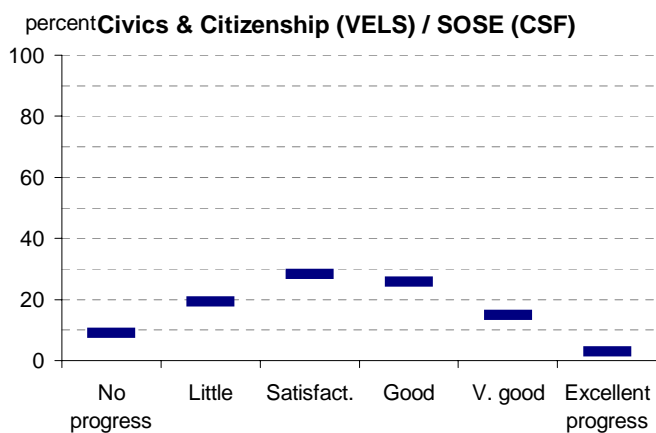
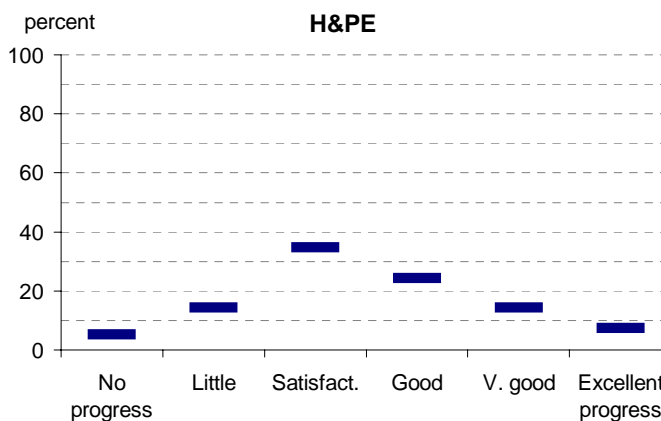
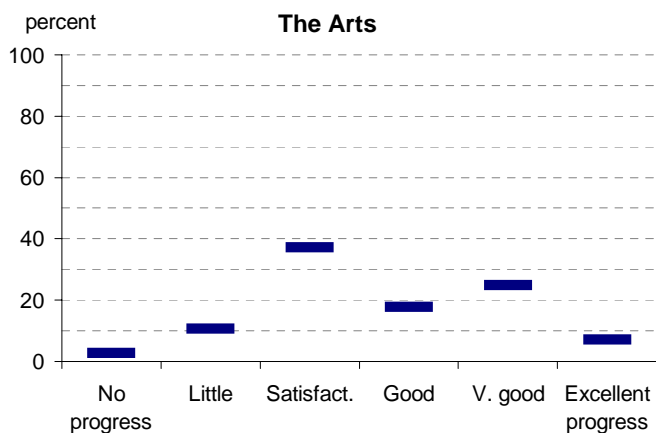
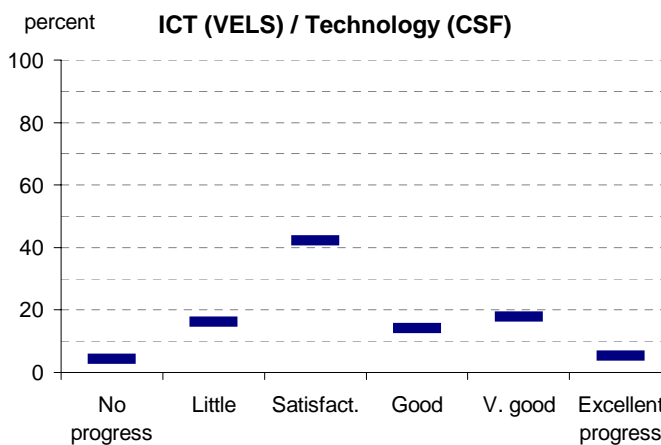
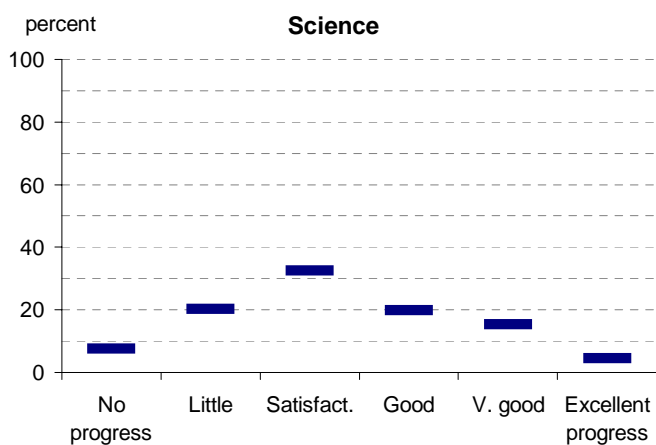
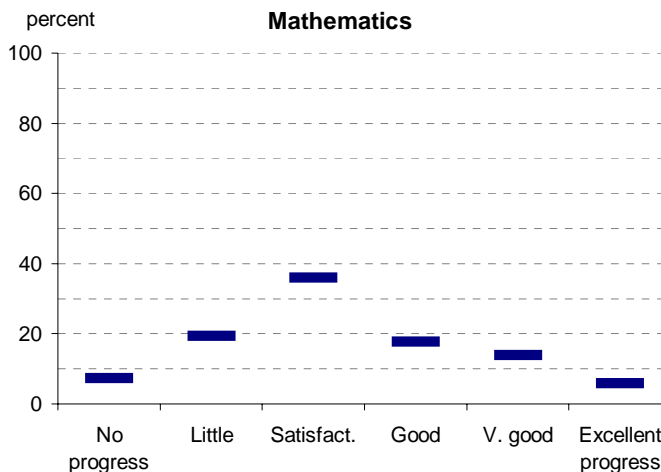
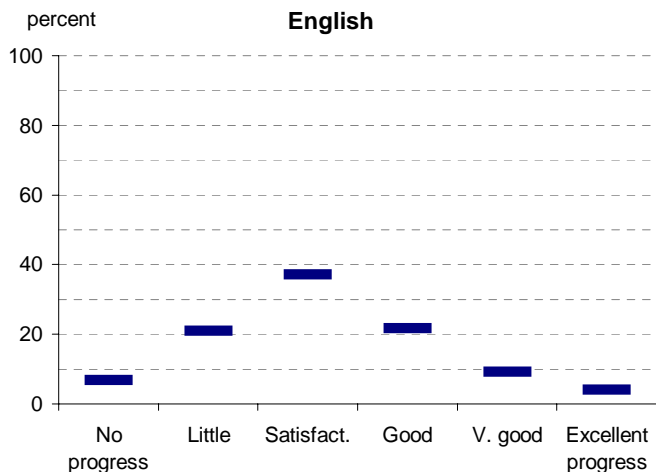
	No progress (%)	Little progress (%)	Satisfactory progress (%)	Good progress (%)	Very good progress (%)	Excellent progress (%)	Total students assessed <sup>1</sup> (no.)
<b>2003 (by CSF KLA)</b>							
English							
Mathematics							
Science							
Technology							
The Arts							
H&PE							
SOSE							
<b>2004 (by CSF KLA)</b>							
English							
Mathematics							
Science							
Technology							
The Arts							
H&PE							
SOSE							
<b>2005 (by CSF KLA)</b>							
English							
Mathematics							
Science							
Technology							
The Arts							
H&PE							
SOSE							
<b>2006 (by VELs Domain)</b>							
English							
Mathematics							
Science							
Technology							
The Arts							
H&PE							
SOSE							
<b>2007 (by VELs Domain)</b>							
English							
Mathematics							
Science							
ICT							
The Arts							
H&PE							
Civics & Citizenship							
<b>2006 Secondary state benchmarks (by VELs Domain)*</b>							
English	7	21	37	22	9	4	
Mathematics	7	19	36	18	14	6	
Science	8	20	32	20	15	5	
Technology	4	16	42	14	18	5	
The Arts	3	11	37	18	25	7	
H&PE	5	14	35	24	14	7	
SOSE	9	19	28	26	15	3	

Notes: <sup>1</sup> If schools provided percentages only, it is not possible to report the number of students assessed. In these cases, the total percentage (100) will be shown.

\* 2007 benchmarks will be calculated in August, when data from all schools has been submitted.

# Teacher Assessment of Student Progress (PSD students)

School no: 8407  
 School name: Roxburgh College



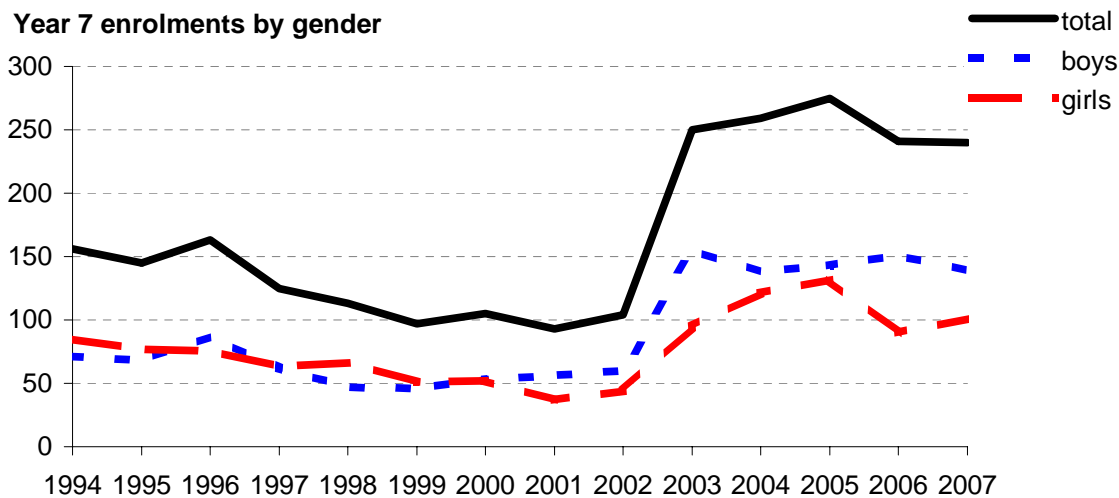
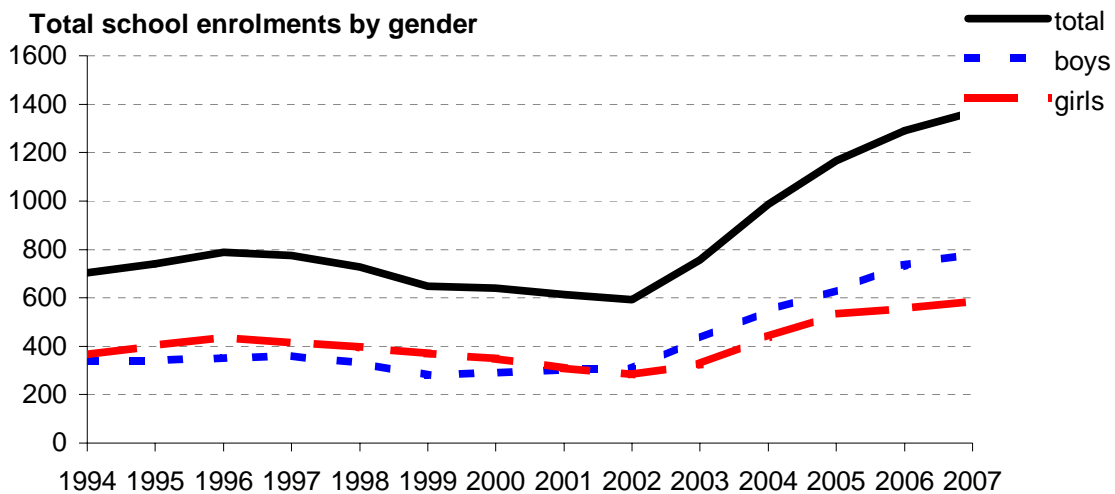
- 2003 (by CSF KLA)
- 2004 (by CSF KLA)
- 2005 (by CSF KLA)
- 2006 (by VELS Domain)
- 2007 (by VELS Domain)
- 2006 Secondary state benchmarks (by VELS Domain)\*

Notes: \* 2007 benchmarks will be calculated in August, when data from all schools has been submitted.

# Enrolments

**School no:** 8407  
**School name:** Roxburgh College  
**Explanation:** Enrolments at February census.  
**Source of data:** February census.

Year	Total school enrolment			Prep enrolment			Year 7 enrolments		
	boys	girls	total	boys	girls	total	boys	girls	total
1994	339	366	705				71	85	156
1995	340	401	741				68	77	145
1996	353	436	789				87	76	163
1997	360	414	774				62	63	125
1998	330	398	728				47	66	113
1999	280	369	649				46	51	97
2000	291	349	640				53	52	105
2001	304	310	614				56	37	93
2002	308	284	592				60	44	104
2003	432	326	758				155	95	250
2004	548	439	987				138	121	259
2005	633	535	1168				143	132	275
2006	735	556	1291				151	90	241
2007	783	585	1368				139	101	240



# Apparent Retention

Notes: \* The school trendline is being trialled. It is only plotted when there is data for each calendar year.

**School no:** 8407

**School name:** Roxburgh College

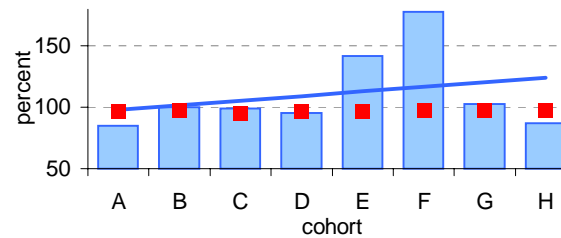
**Explanation:** Apparent retention rates are based on enrolments. For example, Year 7Feb-12Aug apparent retention refers to year 12 enrolment of students in full-time school education in August expressed as a percentage of year 7 enrolments in February five years earlier.

**Source of data:** February and August census.

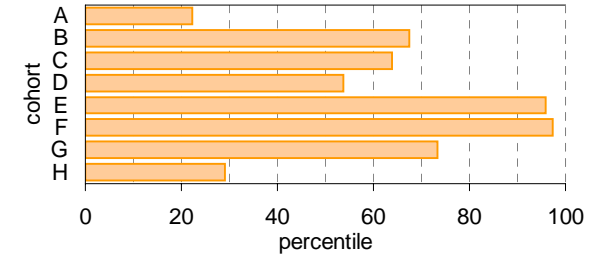
## Year 7 (Feb) - 10 (Aug)

Cohorts:	A	B	C	D	E	F	G	H
Year 7	1997	1998	1999	2000	2001	2002	2003	2004
Year 10	2000	2001	2002	2003	2004	2005	2006	2007
Year 7 (Feb)	no. 125	113	97	105	93	104	250	259
Year 10 (Aug)	no. 106	113	96	100	132	185	257.2	225.2
Year 7 (Feb) - 10 (Aug)	% 84.8	100.0	99.0	95.2	141.9	177.9	102.9	86.9
State mean	% 96.6	97.3	95.0	96.6	96.3	97.6	97.3	97.5

## School against State

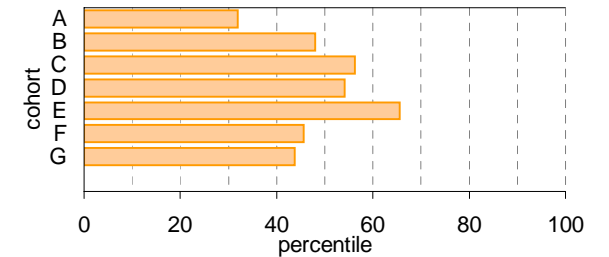
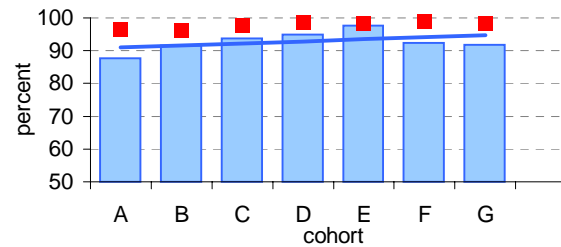


## School as percentile



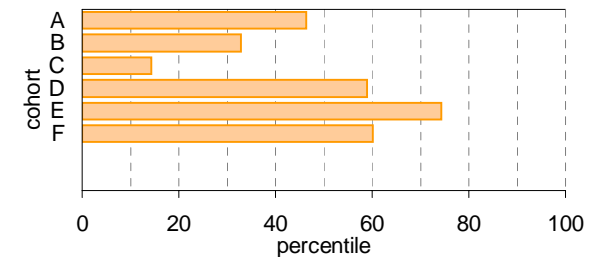
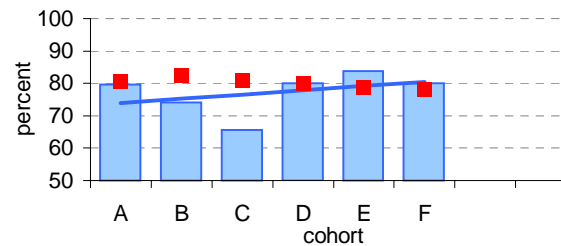
## Year 10 (Aug) - 11 (Feb)

Cohorts:	A	B	C	D	E	F	G
Year 10	2000	2001	2002	2003	2004	2005	2006
Year 11	2001	2002	2003	2004	2005	2006	2007
Year 10 (Aug)	no. 106	113	96	100	132	185	257.2
Year 11 (Feb)	no. 93	103.5	90	95	129	171	236
Year 10 (Aug) - 11 (Feb)	% 87.7	91.6	93.8	95.0	97.7	92.4	91.8
State mean	% 96.4	96.2	97.7	98.7	98.2	99.0	98.2



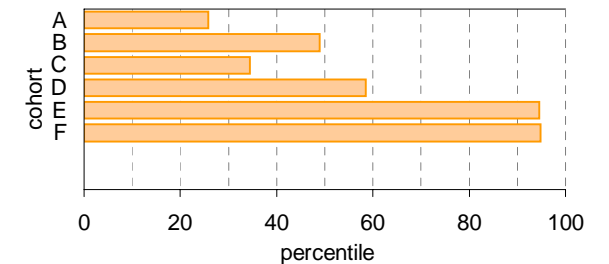
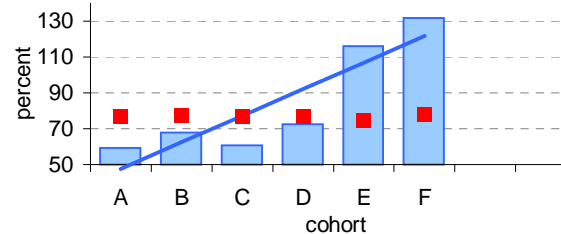
## Year 11 (Feb) - 12 (Aug)

Cohorts:	A	B	C	D	E	F
Year 11	2001	2002	2003	2004	2005	2006
Year 12	2002	2003	2004	2005	2006	2007
Year 11 (Feb)	no. 93	103.5	90	95	129	171
Year 12 (Aug)	no. 74	76.8	59	76	108	137
Year 11 (Feb) - 12 (Aug)	% 79.6	74.2	65.6	80.0	83.7	80.1
State mean	% 80.7	82.5	81.0	79.9	78.8	78.1



## Year 7 (Feb) - 12 (Aug)

Cohorts:	A	B	C	D	E	F
Year 7	1997	1998	1999	2000	2001	2002
Year 12	2002	2003	2004	2005	2006	2007
Year 7 (Feb)	no. 125	113	97	105	93	104
Year 12 (Aug)	no. 74	76.8	59	76	108	137
Year 7 (Feb) - 12 (Aug)	% 59.2	68.0	60.8	72.4	116.1	131.7
State mean	% 76.7	77.2	76.9	76.8	74.6	78.2



Legend: School (blue bar), State Mean (red square), School Trendline\* (blue line)

Legend: School as percentile (orange bar)

# Real Retention

Notes: \* The school trendline is being trialled. It is only plotted when there is data for each calendar year.  
 ^ 2007 benchmarks will be calculated in August, when data from all schools has been submitted.

**School no:** 8407

**School name:** Roxburgh College

**Explanation:** Real retention rates show the percentage of students who have been enrolled at the same school over a period of time.

For example, the formula for the real retention rate for Year 7Feb to 10Aug for school X in 2007 is as follows:

$$\frac{\text{(no. of students enrolled in Yr10 in school X as at August 2007 census and who enrolled prior to 1/3/2004, ie, enrolled in school X at beginning of Yr7)}}{\text{(enrolments in Yr7 Feb in 2004 according to census)}}$$

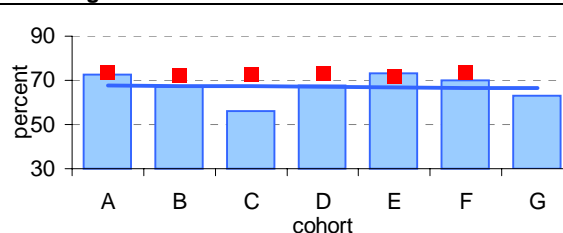
By definition, real school retention will be less than or equal to 100% (assuming there are no students repeating the year, or accelerating through years). Generally, real school retention rates are affected by students transferring to another school & students exiting the school system. They are a measure of the 'holding power' of the school.

**Source of data:** Data retrieved electronically from CASES21 at time of rollover.

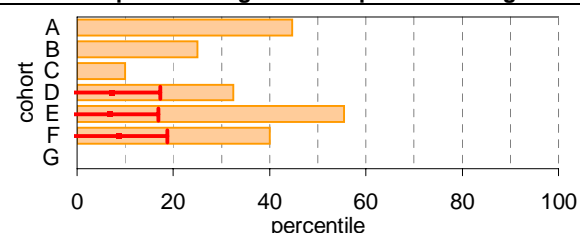
## Year 7 (Feb) - 10 (Aug)

	Cohorts:	A	B	C	D	E	F	G
Year 7		1998	1999	2000	2001	2002	2003	2004
Year 10		2001	2002	2003	2004	2005	2006	2007
Year 7 (Feb)	no.	113	97	105	93	104	250	259
Year 10 (Aug)	no.	82	65	59	63	76	175	163
Year 7 (Feb) - 10 (Aug)	%	72.6	67.0	56.2	67.7	73.1	70.0	62.9
State mean^	%	73.8	72.5	72.7	72.8	71.7	73.5	

### School against State^

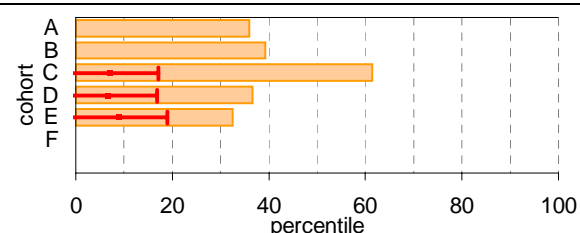
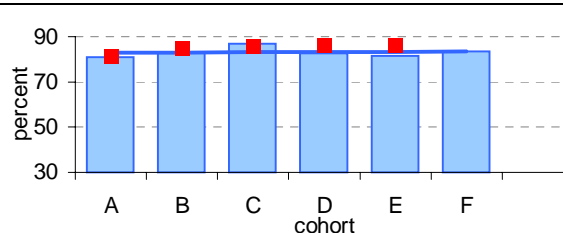


### School as percentile against SFO percentile range^



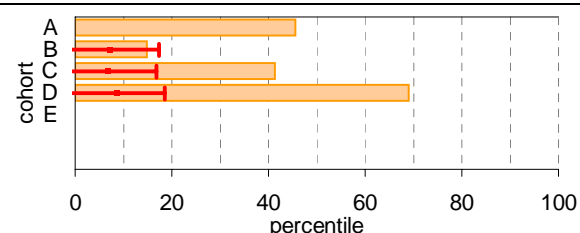
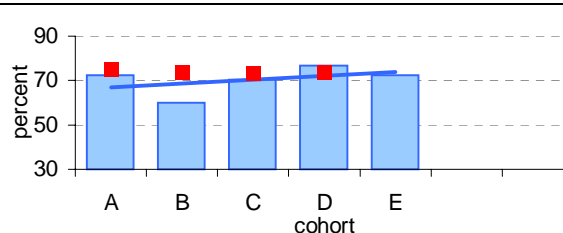
## Year 10 (Aug) - 11 (Feb)

	Cohorts:	A	B	C	D	E	F
Year 10		2001	2002	2003	2004	2005	2006
Year 11		2002	2003	2004	2005	2006	2007
Year 10 (Aug)	no.	113	96	100	132	185	257.2
Year 11 (Feb)	no.	91.5	80	87	109	151	215
Year 10 (Aug) - 11 (Feb)	%	81.0	83.3	87.0	82.6	81.6	83.6
State mean^	%	81.3	84.9	85.9	85.9	86.1	



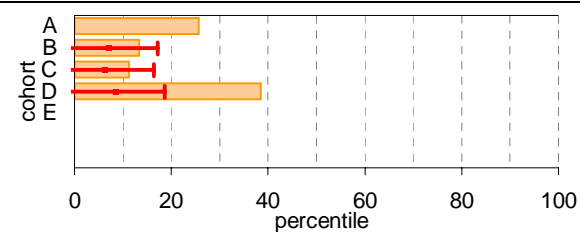
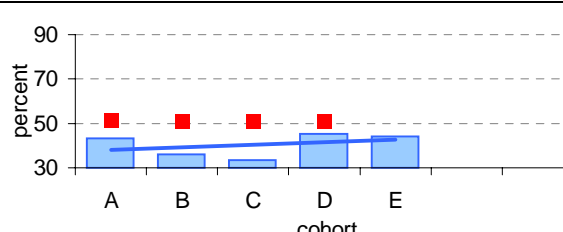
## Year 11 (Feb) - 12 (Aug)

	Cohorts:	A	B	C	D	E
Year 11		2002	2003	2004	2005	2006
Year 12		2003	2004	2005	2006	2007
Year 11 (Feb)	no.	103.5	90	95	129	171
Year 12 (Aug)	no.	74.8	54	67	99	124
Year 11 (Feb) - 12 (Aug)	%	72.3	60.0	70.5	76.7	72.5
State mean^	%	75.0	73.9	73.0	73.5	



## Year 7 (Feb) - 12 (Aug)

	Cohorts:	A	B	C	D	E
Year 7		1998	1999	2000	2001	2002
Year 12		2003	2004	2005	2006	2007
Year 7 (Feb)	no.	113	97	105	93	104
Year 12 (Aug)	no.	48.9	35	35	42	46
Year 7 (Feb) - 12 (Aug)	%	43.3	36.1	33.3	45.2	44.2
State mean^	%	51.3	50.6	51.0	51.1	



Legend: School (blue bar), State Mean (red square), School Trendline\* (blue line), School as percentile (orange bar), SFO Percentile range (red arrow)

# Exit Destination: Year 10

School no: 8407

School name: Roxburgh College

Explanation: The destination of students who left during or at the end of Year 10.

Source of data: Data retrieved electronically from CASES21 following February census.

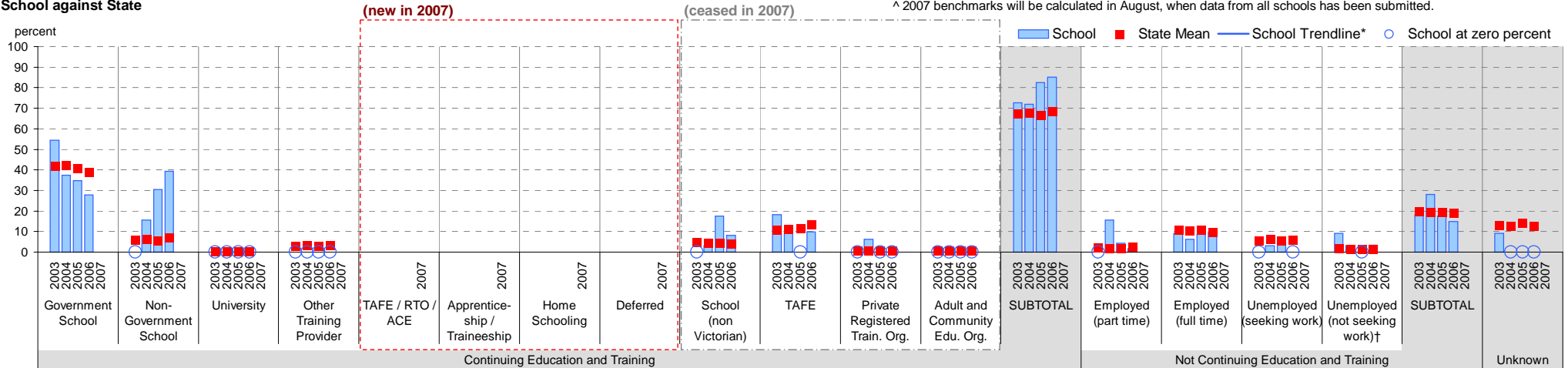
Exit Destination	2003		2004		2005		2006		2007		2007 state^
	n	%	n	%	n	%	n	%	n	%	%
<b>Continuing education and training</b>											
Government School	6	54.5	12	37.5	8	34.8	17	27.9			
Non-Government School			5	15.6	7	30.4	24	39.3			
University											
Other Training Provider											
<b>(new in 2007)</b>											
TAFE / RTO / ACE											
Apprenticeship / Traineeship											
Home Schooling											
Deferred											
<b>(ceased in 2007)</b>											
School (non Victorian)			1	3.1	4	17.4	5	8.2			
TAFE	2	18.2	3	9.4			6	9.8			
Private Registered Training Organisation			2	6.3							
Adult and Community Education Organisation											
<b>SUBTOTAL</b>	<b>8</b>	<b>72.7</b>	<b>23</b>	<b>71.9</b>	<b>19</b>	<b>82.6</b>	<b>52</b>	<b>85.2</b>			
<b>Not continuing education and training</b>											
Employed (part time)			5	15.6	1	4.3	1	1.6			
Employed (full time)	1	9.1	2	6.3	2	8.7	6	9.8			
Unemployed (seeking work)			1	3.1	1	4.3					
Unemployed (not seeking work)†	1	9.1	1	3.1			2	3.3			
<b>SUBTOTAL</b>	<b>2</b>	<b>18.2</b>	<b>9</b>	<b>28.1</b>	<b>4</b>	<b>17.4</b>	<b>9</b>	<b>14.8</b>			
<b>Unknown</b>	<b>1</b>	<b>9.1</b>									
<b>TOTAL</b>	<b>11</b>	<b>100.0</b>	<b>32</b>	<b>100.0</b>	<b>23</b>	<b>100.0</b>	<b>61</b>	<b>100.0</b>			
Total Yr 10 February enrolment	101		121		184		256				

Notes: \* The school trendline is being trialled. It is only plotted when there is data for each calendar year.

† Includes deceased students.

^ 2007 benchmarks will be calculated in August, when data from all schools has been submitted.

## School against State



# Exit Destination: Year 11

School no: 8407

School name: Roxburgh College

Explanation: The destination of students who left during or at the end of Year 11.

Source of data: Data retrieved electronically from CASES21 following February census.

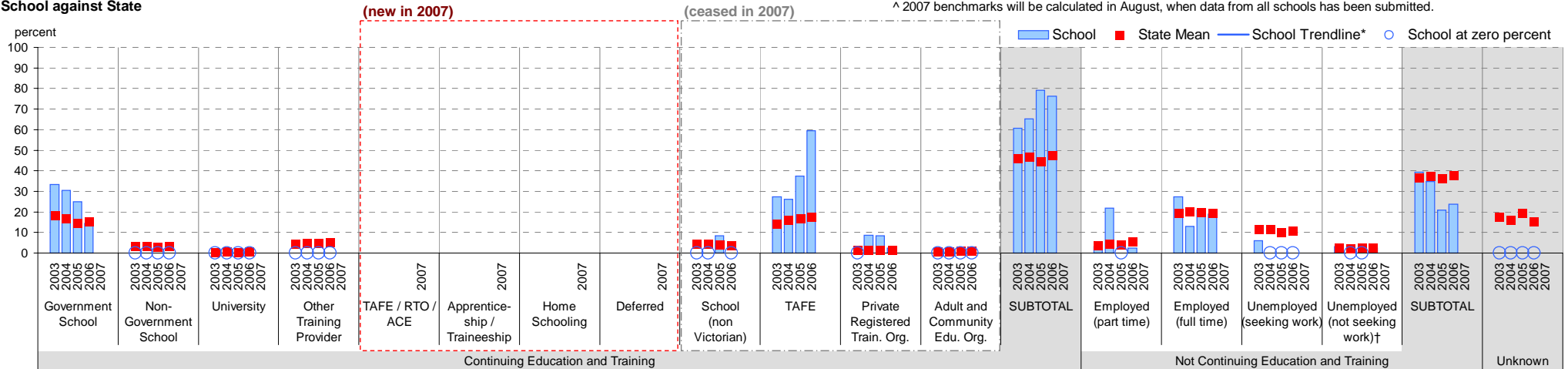
Exit Destination	2003		2004		2005		2006		2007		2007 state^
	n	%	n	%	n	%	n	%	n	%	%
<b>Continuing education and training</b>											
Government School	11	33.3	7	30.4	6	25.0	6	14.3			
Non-Government School											
University											
Other Training Provider											
<b>(new in 2007)</b>											
TAFE / RTO / ACE											
Apprenticeship / Traineeship											
Home Schooling											
Deferred											
<b>(ceased in 2007)</b>											
School (non Victorian)					2	8.3					
TAFE	9	27.3	6	26.1	9	37.5	25	59.5			
Private Registered Training Organisation			2	8.7	2	8.3	1	2.4			
Adult and Community Education Organisation											
<b>SUBTOTAL</b>	<b>20</b>	<b>60.6</b>	<b>15</b>	<b>65.2</b>	<b>19</b>	<b>79.2</b>	<b>32</b>	<b>76.2</b>			
<b>Not continuing education and training</b>											
Employed (part time)	1	3.0	5	21.7			1	2.4			
Employed (full time)	9	27.3	3	13.0	5	20.8	8	19.0			
Unemployed (seeking work)	2	6.1									
Unemployed (not seeking work)†	1	3.0					1	2.4			
<b>SUBTOTAL</b>	<b>13</b>	<b>39.4</b>	<b>8</b>	<b>34.8</b>	<b>5</b>	<b>20.8</b>	<b>10</b>	<b>23.8</b>			
<b>Unknown</b>											
<b>TOTAL</b>	<b>33</b>	<b>100.0</b>	<b>23</b>	<b>100.0</b>	<b>24</b>	<b>100.0</b>	<b>42</b>	<b>100.0</b>			
Total Yr 11 February enrolment	90		95		129		171				

Notes: \* The school trendline is being trialled. It is only plotted when there is data for each calendar year.

† Includes deceased students.

^ 2007 benchmarks will be calculated in August, when data from all schools has been submitted.

## School against State



# Exit Destination: Students who left Year 12 before completing the year

School no: 8407

School name: Roxburgh College

Explanation: The destination of students who left prior to completing Year 12.

Source of data: Data retrieved electronically from CASES21 following February census.

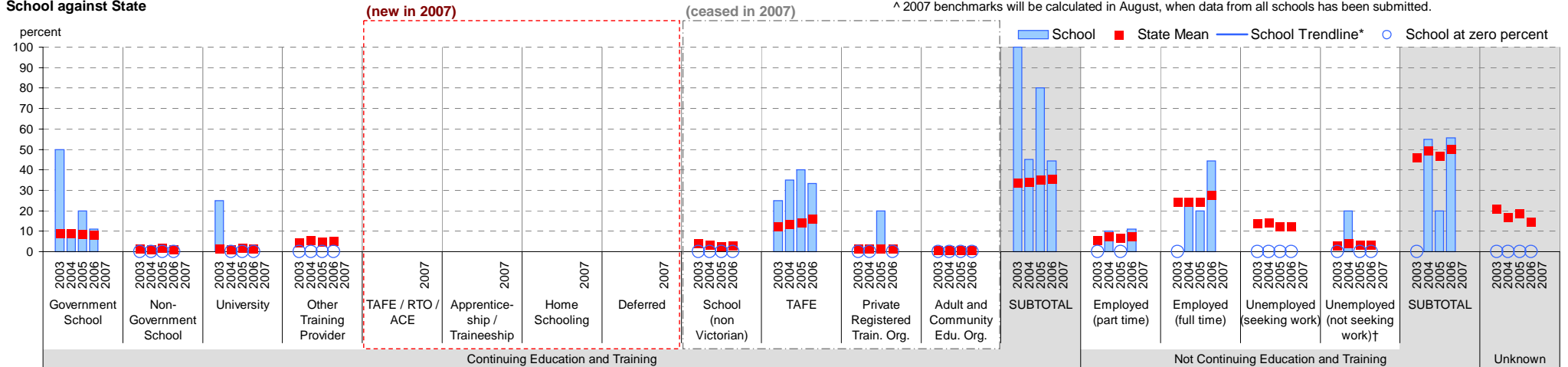
Exit Destination	2003		2004		2005		2006		2007		2007 state^
	n	%	n	%	n	%	n	%	n	%	
<b>Continuing education and training</b>											
Government School	2	50.0	2	10.0	1	20.0	1	11.1			
Non-Government School											
University	1	25.0									
Other Training Provider											
<b>(new in 2007)</b>											
TAFE / RTO / ACE											
Apprenticeship / Traineeship											
Home Schooling											
Deferred											
<b>(ceased in 2007)</b>											
School (non Victorian)											
TAFE	1	25.0	7	35.0	2	40.0	3	33.3			
Private Registered Training Organisation					1	20.0					
Adult and Community Education Organisation											
<b>SUBTOTAL</b>	<b>4</b>	<b>100.0</b>	<b>9</b>	<b>45.0</b>	<b>4</b>	<b>80.0</b>	<b>4</b>	<b>44.4</b>			
<b>Not continuing education and training</b>											
Employed (part time)			2	10.0			1	11.1			
Employed (full time)			5	25.0	1	20.0	4	44.4			
Unemployed (seeking work)											
Unemployed (not seeking work)†			4	20.0							
<b>SUBTOTAL</b>			<b>11</b>	<b>55.0</b>	<b>1</b>	<b>20.0</b>	<b>5</b>	<b>55.6</b>			
<b>Unknown</b>											
<b>TOTAL</b>	<b>4</b>	<b>100.0</b>	<b>20</b>	<b>100.0</b>	<b>5</b>	<b>100.0</b>	<b>9</b>	<b>100.0</b>			
Total Yr 12 February enrolment	80		63		76		111				

Notes: \* The school trendline is being trialled. It is only plotted when there is data for each calendar year.

† Includes deceased students.

^ 2007 benchmarks will be calculated in August, when data from all schools has been submitted.

## School against State



# Exit Destination: Students who left at the end of Year 12

School no: 8407

School name: Roxburgh College

Explanation: The destination of students who left at the end of Year 12.

Source of data: Data retrieved electronically from CASES21 following February census.

Exit Destination	2003		2004		2005		2006		2007		2007 state^
	n	%	n	%	n	%	n	%	n	%	
<b>Continuing education and training</b>											
Government School	2	2.5	1	1.4			1	0.9			
Non-Government School											
University	17	21.3	12	16.7	34	44.7	43	39.8			
Other Training Provider											
<b>(new in 2007)</b>											
TAFE / RTO / ACE											
Apprenticeship / Traineeship											
Home Schooling											
Deferred											
<b>(ceased in 2007)</b>											
School (non Victorian)											
TAFE	47	58.8	42	58.3	37	48.7	51	47.2			
Private Registered Training Organisation	2	2.5	2	2.8			3	2.8			
Adult and Community Education Organisation											
<b>SUBTOTAL</b>	<b>68</b>	<b>85.0</b>	<b>57</b>	<b>79.2</b>	<b>71</b>	<b>93.4</b>	<b>98</b>	<b>90.7</b>			
<b>Not continuing education and training</b>											
Employed (part time)	5	6.3	6	8.3							
Employed (full time)	5	6.3	6	8.3	3	3.9	9	8.3			
Unemployed (seeking work)	1	1.3			2	2.6					
Unemployed (not seeking work)†	1	1.3	1	1.4			1	0.9			
<b>SUBTOTAL</b>	<b>12</b>	<b>15.0</b>	<b>13</b>	<b>18.1</b>	<b>5</b>	<b>6.6</b>	<b>10</b>	<b>9.3</b>			
<b>Unknown</b>											
<b>TOTAL</b>	<b>80</b>	<b>100.0</b>	<b>72</b>	<b>100.0</b>	<b>76</b>	<b>100.0</b>	<b>108</b>	<b>100.0</b>			
Total Yr 12 February enrolment	80		63		76		111				

Notes: \* The school trendline is being trialled. It is only plotted when there is data for each calendar year.

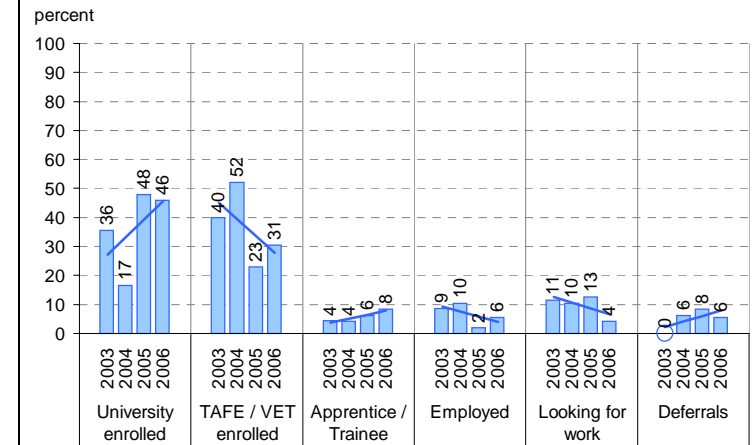
† Includes deceased students.

^ 2007 benchmarks will be calculated in August, when data from all schools has been submitted.

## On Track

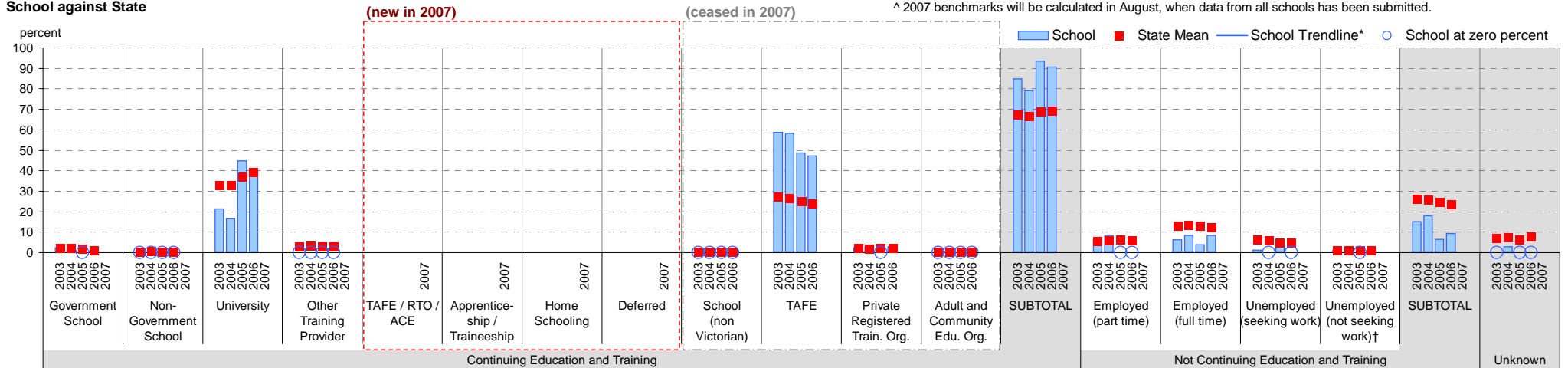
Source of data: Data received from a telephone survey of Year 12 completers, conducted in April / May of the subsequent year.

School only



Note: The exit destination data from On Track and CASES21 is not directly comparable for several reasons, one of which is the different bases. CASES21 data is based on all Year 12 completers, whereas On Track is based on Year 12 completers who responded to the survey. Hence the CASES21 data has an "unknown" category and the On Track data does not. Another reason is the slightly different categories for example, CASES21 includes a "home schooling" category.

## School against State



# Student Absence

School no: 8407

School name: Roxburgh College

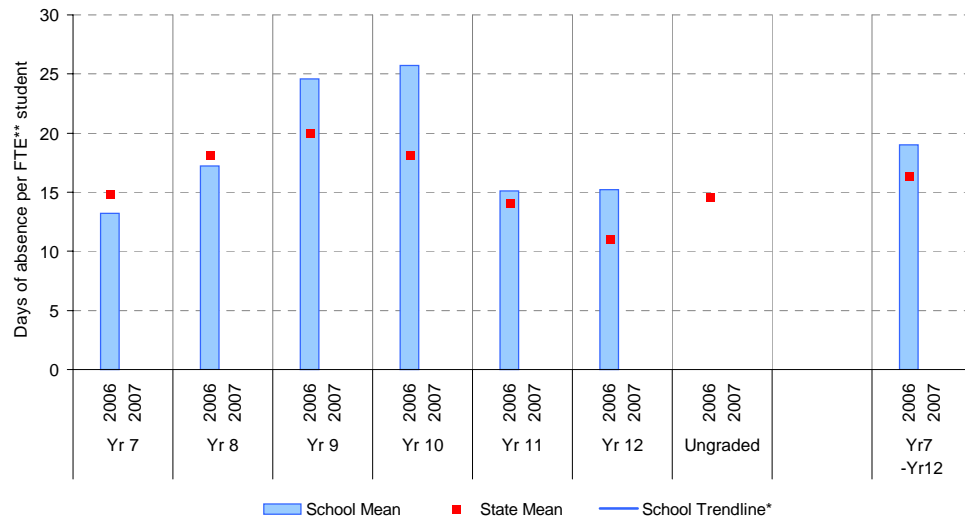
Source of data: Data retrieved electronically from CASES21.

**Explanation:** The average (mean) number of absent days† per student. Up to 2006, the formula used to calculate the average number of absent days per student was based on student headcount. From 2006, the formula was based on FTE\*\* students. The new formula provides a more accurate summary of student absence. For 2006, student absence is provided for both student headcount and FTE student. Note that 20 absent days equates to 1 absent day per fortnight, and 10 absent days to 1 absent day per month.

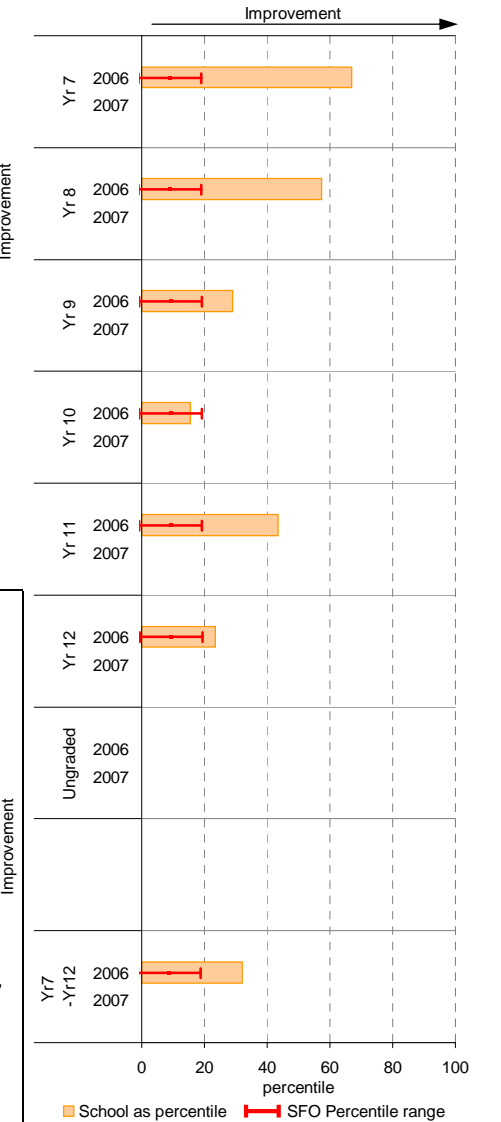
## Student Absence (by FTE\*\* student, 2006 and onward)

	School		2006 state benchmark^			
	2006	2007	25th ptile	Mean	75th ptile	
Yr 7	241.0	13.2	234.3	12.8	14.8	17.9
Yr 8	278.0	17.2	242.2	14.7	18.1	22.1
Yr 9	234.0	24.6	293.8	16.0	19.9	25.9
Yr 10	256.2	25.7	222.3	15.2	18.2	22.7
Yr 11	171.0	15.1	229.1	11.4	14.1	18.0
Yr 12	111.0	15.2	138.1	8.1	11.0	14.5
Ungraded					14.5	
7-12 mean		19			16.3	

School Mean against State Mean^



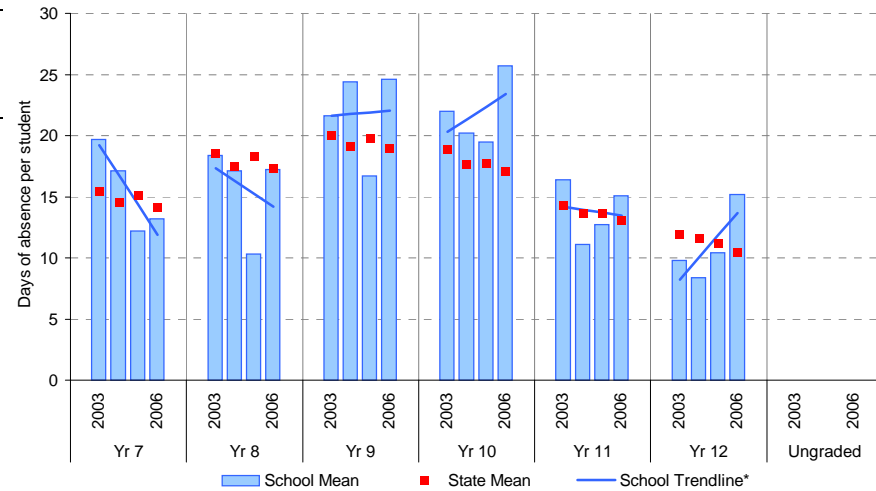
School Mean as percentile against SFO percentile range^



## Student Absence (by student headcount, 2003-2006)

	2003		2004		2005		2006	
	Enrolments	Avg absent days / student	Enrolments	Avg absent days / student	Enrolments	Avg absent days / student	Enrolments	Avg absent days / student
Yr 7	250	19.7	259	17.1	276	12.2	241	13.2
Yr 8	147	18.4	268	17.1	242	10.3	278	17.2
Yr 9	90	21.6	181	24.4	264	16.7	234	24.6
Yr 10	101	22	121	20.2	185	19.5	256.2	25.7
Yr 11	90	16.4	95	11.1	130	12.7	171	15.1
Yr 12	79.6	9.8	63	8.4	76	10.4	111	15.2
Ungraded								
7-12 mean		18.5		17.7		13.9		19

School Mean against State Mean



Improvement

Notes: † Includes non-curriculum absences only (absence codes 200, 201, 202, 203, 205, 206, 207, 208, 209, 210, 211, 300, 401, 500, 700, 800, 804, 805, 900).

\* The school trendline is being trialled. It is only plotted when there is data for each calendar year.  
 \*\* FTE = Full Time Equivalent (including part-time and part-year fractions).

^ 2007 benchmarks will be calculated in August, when data from all schools has been submitted.

# Parent Opinion

School no: 8407

School name: Roxburgh College

Explanation: A self-completion questionnaire to obtain parents' opinions of the school. Parents rated a number of statements using a scale where 1=strongly disagree & 7=strongly agree. The statements were grouped into the following categories.

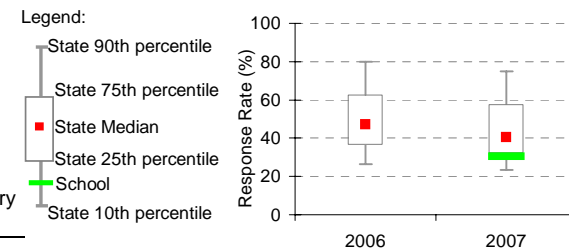
Source of data: Data scanned from questionnaires completed by parents.

Variable No.	Name	Year	School mean	State Secondary median
1	School Improvement	2006	5.15	5.13
		2007	5.04	5.11
2	Approachability	2006	5.34	5.11
		2007	5.18	5.10
3	Teacher Morale	2006	5.09	4.92
		2007	4.74	4.88
4	Parent Input	2006	5.03	4.89
		2007	4.84	4.83
5	Stimulating Learning	2006	5.07	4.81
		2007	4.71	4.79
6	Behaviour Management	2006	4.63	4.76
		2007	4.55	4.76
7	Reporting	2006	5.43	5.28
		2007	5.13	5.11

Variable No.	Name	Year	School mean	State Secondary median
8	Learning Focus	2006	5.17	5.27
		2007	5.06	5.24
9	Transitions	2006	5.48	5.24
		2007	5.13	5.23
10	Extra Curricula	2006	4.90	4.67
		2007	4.88	4.67
11	Homework	2006	4.98	4.57
		2007	4.82	4.51
12	General Satisfaction	2006	5.31	5.33
		2007	4.97	5.31
13	Student Safety^	2006	5.42	5.37
		2007	5.13	5.42
14	Classroom Behaviour^	2006	3.18	3.56
		2007	2.65	3.47

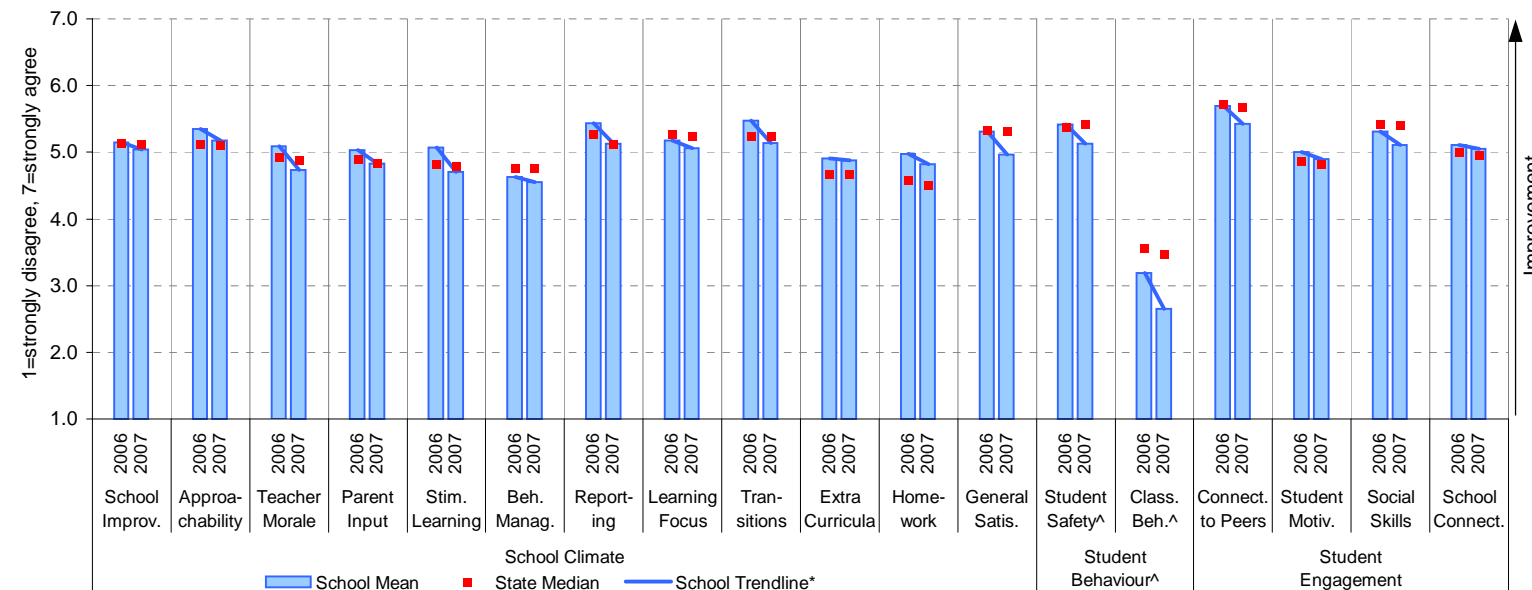
Variable No.	Name	Year	School mean	State Secondary median
15	Connectedness to Peers	2006	5.70	5.71
		2007	5.43	5.68
16	Student Motivation	2006	5.01	4.87
		2007	4.90	4.81
17	Social Skills	2006	5.31	5.42
		2007	5.11	5.41
18	School Connectedness	2006	5.11	4.99
		2007	5.05	4.95

## School response rate\*\* against Secondary school distribution



Year	No. of respondents	No. invited	Response Rate
2006	95		N/A
2007	61	200	30.5%

## School Mean against Secondary State Mean



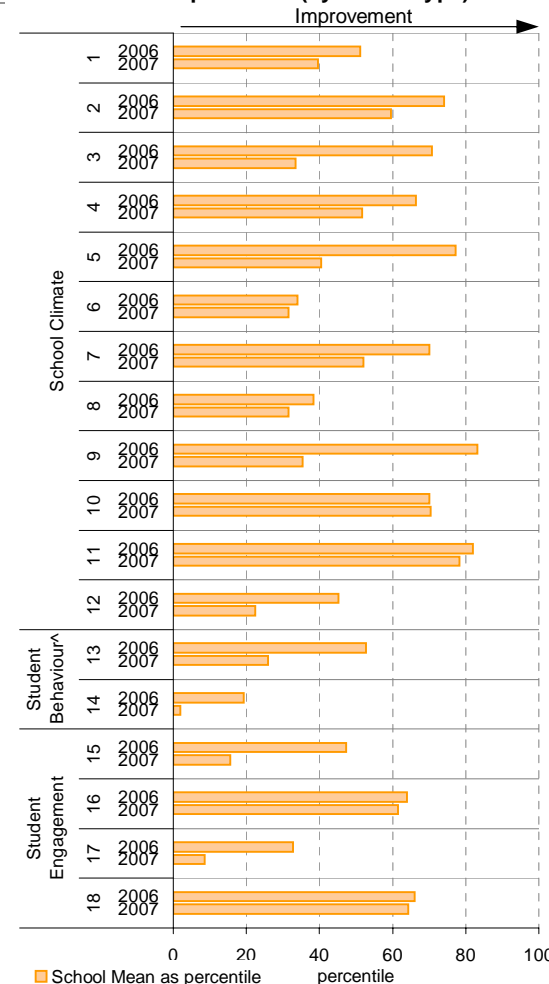
Notes: \* The school trendline is being trialled. It is only plotted when there is data for each calendar year.

\*\* If there were 6 or less respondents, table data is not shown for confidentiality reasons. If there were 3 or less respondents, graph data is not shown for confidentiality reasons.

^ Parents' responses to all negatively phrased questions have been reversed for reporting purposes. Across all variables, the higher the score or percentile rank, the more positive parents' perceptions.

^^ Benchmarks available for Primary, Secondary, Pri/Sec, Special and SDS schools.

## School Mean as percentile (by school type)



# Parent Opinion (pre-2006)

School no: 8407

School name: Roxburgh College

Explanation: A self-completion questionnaire to obtain parents' opinions of the school. Parents rated a number of statements using a scale where 1=strongly disagree & 6=strongly agree. The statements were grouped into the following categories.

Source of data: From 2004, data scanned from questionnaires completed by parents.

Year	Number of respondents
2004	88
2005	93

Variable	Year	School Mean	Secondary State Mean
Quality of Teaching	2001	4.66	4.46
	2002	4.23	4.53
	2003	4.60	4.54
	2004	4.69	4.71
	2005	4.54	4.70

Variable	Year	School Mean	Secondary State Mean
Reporting and Feedback	2004	4.98	5.00
	2005	4.94	4.96
Student Behaviour	2004	4.94	5.07
	2005	4.76	5.07

Variable	Year	School Mean	Secondary State Mean
School / Parent Relations	2004	4.81	5.00
	2005	4.61	4.95
Extra-Curricular	2004	4.86	5.11
	2005	4.86	5.09

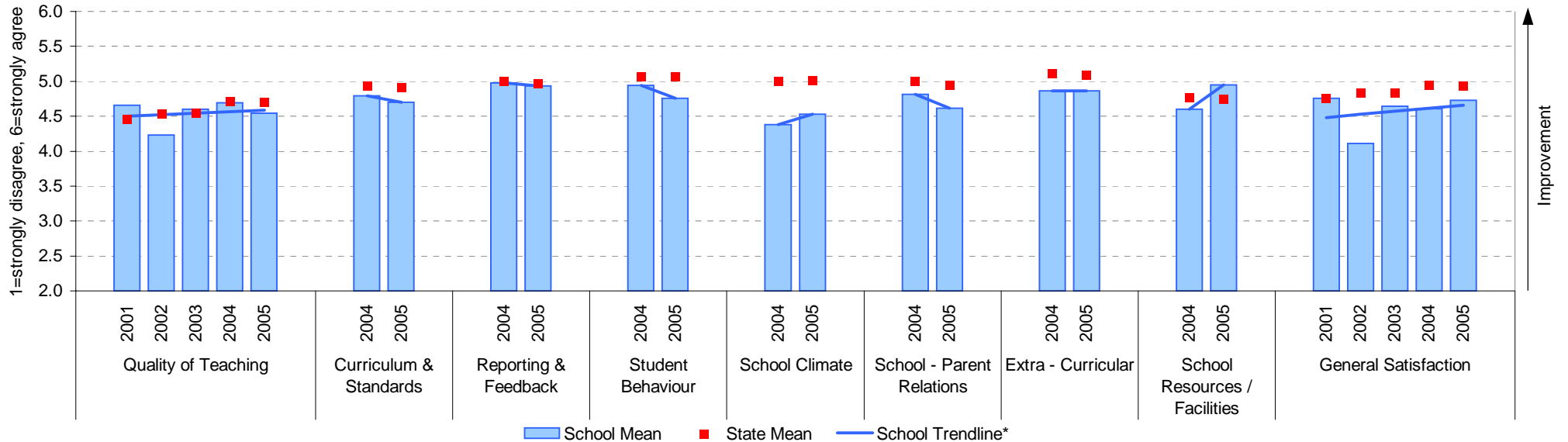
Variable	Year	School Mean	Secondary State Mean
General Satisfaction	2001	4.76	4.76
	2002	4.11	4.83
	2003	4.64	4.83
	2004	4.61	4.94
	2005	4.73	4.93

Variable	Year	School Mean	Secondary State Mean
Curriculum and Standards	2004	4.79	4.93
	2005	4.70	4.91

Variable	Year	School Mean	Secondary State Mean
School Climate	2004	4.38	5.00
	2005	4.53	5.01

Variable	Year	School Mean	Secondary State Mean
School Resources / Facilities	2004	4.60	4.77
	2005	4.95	4.74

## School Mean against Secondary State Mean



Notes: \* The school trendline is being trialled. It is only plotted when there is data for each calendar year.

^^ State Means available for Primary, Secondary, Pri/Sec, Special and SDS schools.

# Staff Opinion

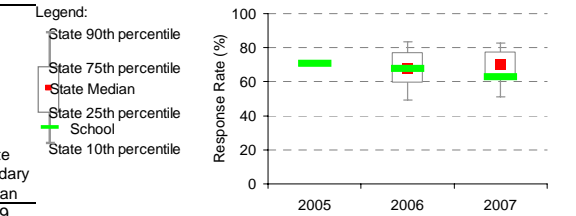
School no: 8407

School name: Roxburgh College

Explanation: A self-completion questionnaire to obtain the staff's opinions of the school. The survey was administered online using the School Organisational Health Questionnaire.

Source of data: Data transmitted from school staff to DEECD via an online survey application.

## School response rate\*\* against Secondary school distribution



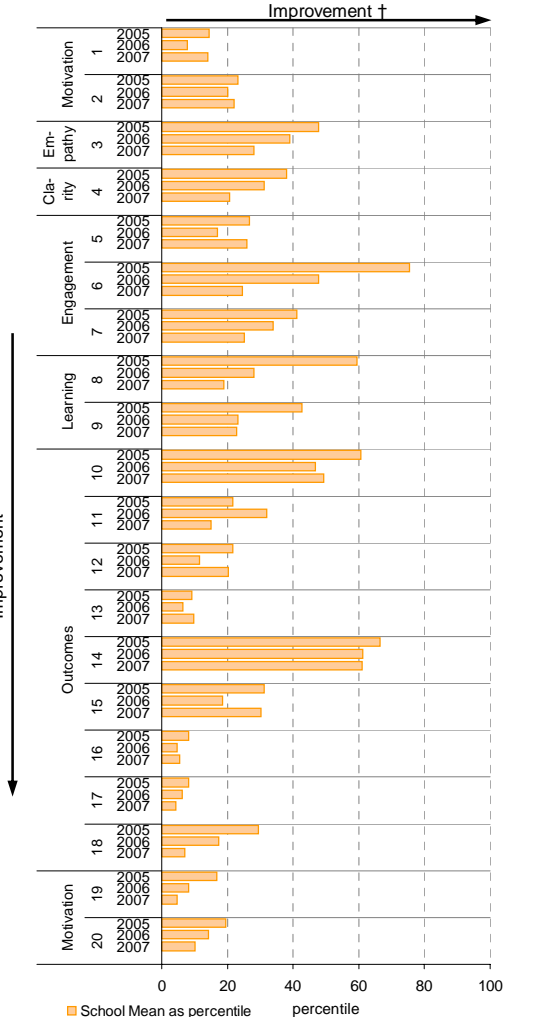
	No. of respondents	No. invited	Response Rate
2005	96	136	71%
2006	101	149	68%
2007	108	172	63%

Variable	No.	Name	Year	School mean	State Secondary median
1	Individual Morale	2005	57.2	63.3	
		2006	55.3	64.2	
		2007	56.2	63.5	
2	School Morale	2005	52.1	60.7	
		2006	52.3	60.8	
		2007	52.4	60.2	
3	Supportive Leadership	2005	63.7	64.3	
		2006	61.1	65.0	
		2007	58.1	63.8	
4	Role Clarity	2005	66.9	68.5	
		2006	65.8	68.0	
		2007	63.4	67.8	
5	Professional Interaction	2005	64.6	68.2	
		2006	63.4	68.1	
		2007	65.4	68.3	
6	Participative Decision-Making	2005	64.7	58.7	
		2006	58.7	59.0	
		2007	52.3	58.7	
7	Goal Congruence	2005	63.3	65.0	
		2006	61.9	64.7	
		2007	59.9	65.3	

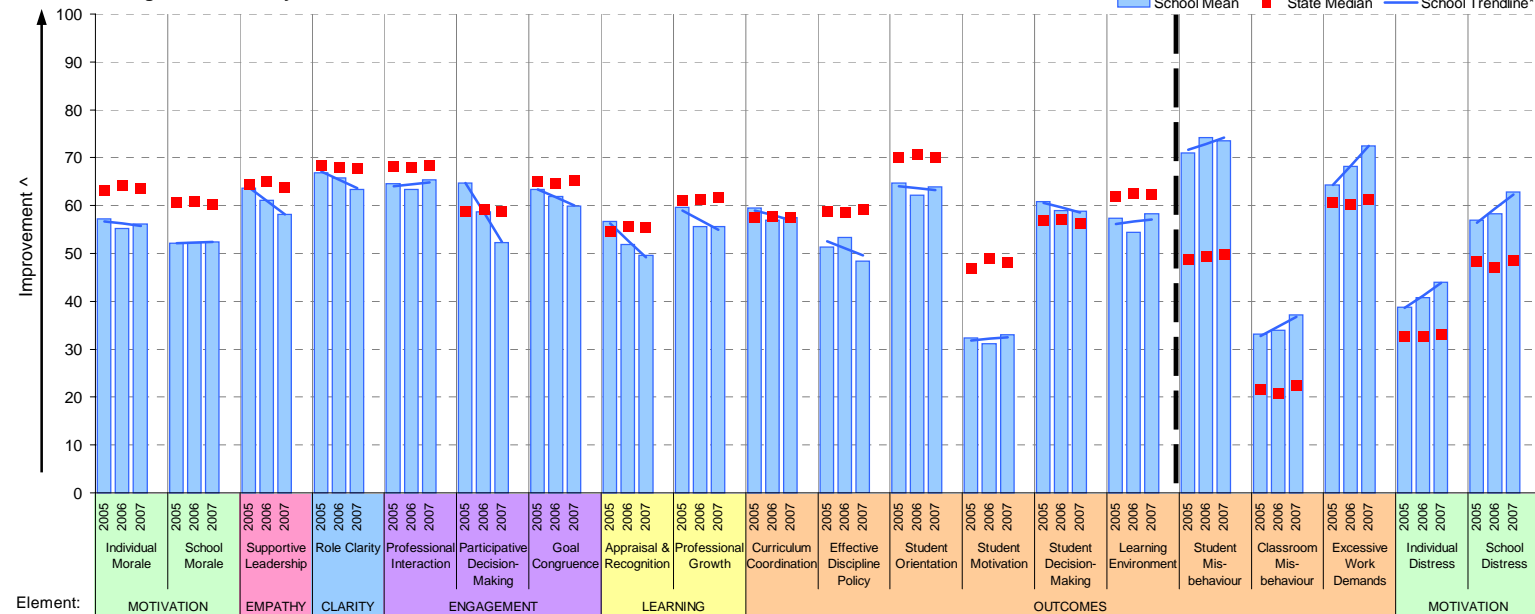
Variable	No.	Name	Year	School mean	State Secondary median
8	Appraisal & Recognition	2005	56.7	54.7	
		2006	51.9	55.6	
		2007	49.7	55.4	
9	Professional Growth	2005	59.7	61.0	
		2006	55.7	61.2	
		2007	55.7	61.6	
10	Curriculum Coordination	2005	59.5	57.5	
		2006	56.9	57.8	
		2007	57.5	57.5	
11	Effective Discipline Policy	2005	51.4	58.7	
		2006	53.3	58.5	
		2007	48.5	59.2	
12	Student Orientation	2005	64.7	70.0	
		2006	62.2	70.5	
		2007	63.9	70.0	
13	Student Motivation	2005	32.3	46.9	
		2006	31.2	48.9	
		2007	33.0	48.1	
14	Student Decision-Making	2005	60.9	56.8	
		2006	59.0	57.2	
		2007	58.9	56.2	

Variable	No.	Name	Year	School mean	State Secondary median
15	Learning Environment	2005	57.3	61.9	
		2006	54.3	62.6	
		2007	58.3	62.3	
16	Student Misbehaviour	2005	71.0	48.7	
		2006	74.2	49.3	
		2007	73.5	49.9	
17	Classroom Misbehaviour	2005	33.2	21.6	
		2006	34.0	20.9	
		2007	37.1	22.4	
18	Excessive Work Demands	2005	64.3	60.7	
		2006	68.2	60.4	
		2007	72.5	61.4	
19	Individual Distress	2005	38.8	32.8	
		2006	40.8	32.6	
		2007	44.0	33.2	
20	School Distress	2005	57.0	48.3	
		2006	58.3	47.1	
		2007	62.8	48.6	

## School Mean as percentile (by school type)



## School Mean against Secondary State Mean



Notes: \* The school trendline is being trialled. It is only plotted when there is data for each calendar year.

\*\* If there were 6 or less respondents, table data is not shown for confidentiality reasons. If there were 3 or less respondents, graph data is not shown for confidentiality reasons.

^ The higher the school mean, the more positive the outcome for variables 1 to 15. The lower the school mean, the more positive the outcome for variables 16 to 20.

† The higher the school percentile, the more positive the outcome for all variables.

^^ Benchmarks are available for Primary, Secondary, Pri/Sec, Special & SDS schools.

# Staff Sick Leave

School no: 8407

School name: Roxburgh College

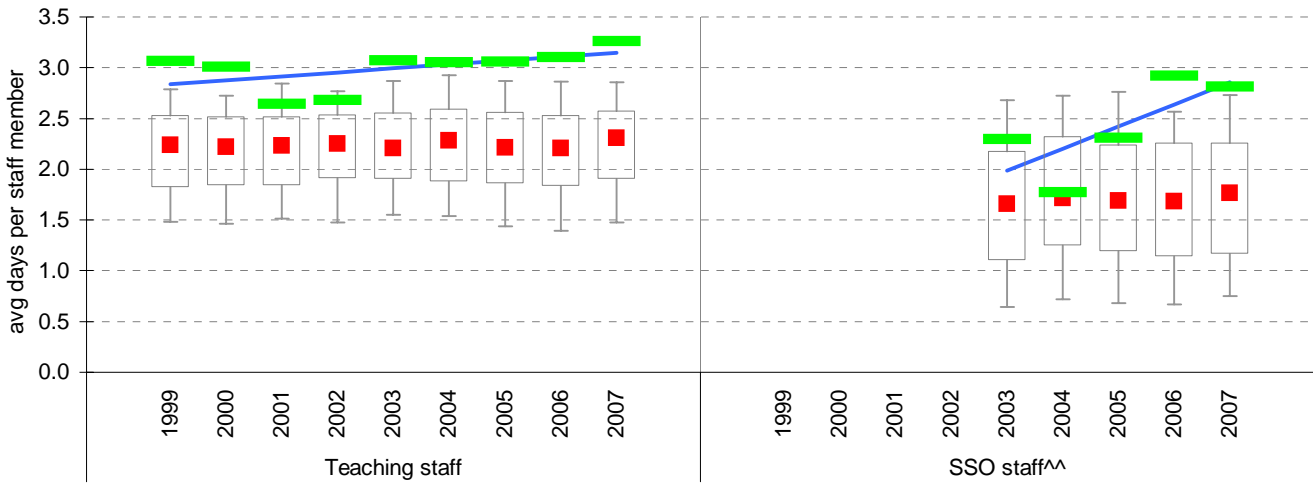
**Explanation:** The number of non-certificated and total sick leave days taken per staff member. A detailed explanation on how staff sick leave is calculated is provided in the Annual Reports Frequently Asked Questions page of the Standards website (<http://www.sofweb.vic.edu.au/standards/account/arepq.htm>).

**Source of data:** Human Resources Management System (HRMS)^.

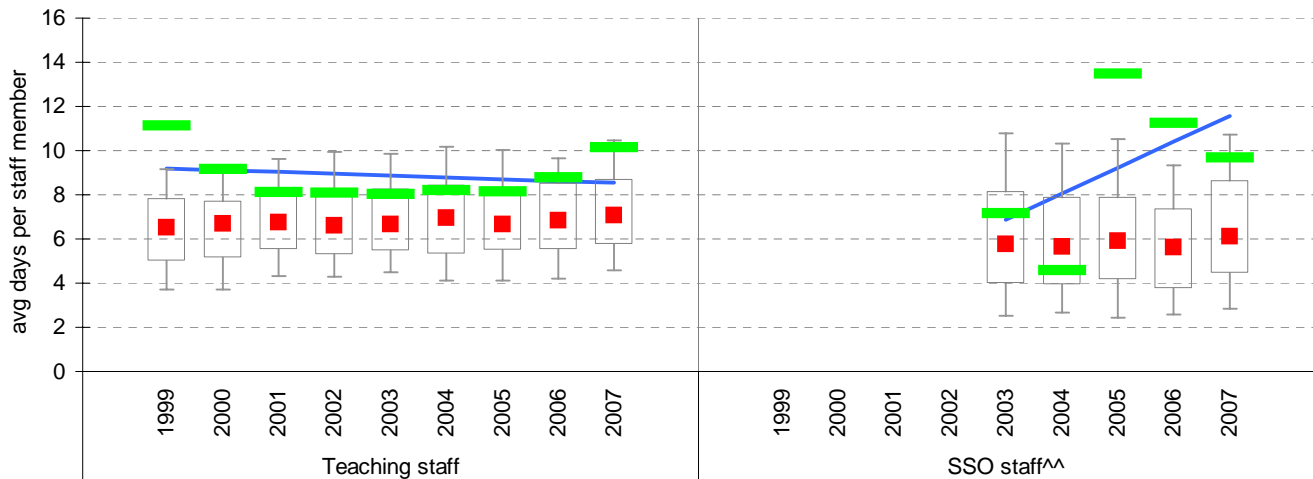
Staff Type	Non-Certificated sick leave days per staff member^									2007 State Median
	1999	2000	2001	2002	2003	2004	2005	2006	2007	
Teacher	3.06	3.01	2.64	2.68	3.07	3.05	3.06	3.10	3.26	2.31
SSO^^					2.30	1.77	2.31	2.92	2.81	1.77

Staff Type	Total sick leave days per staff member^									2007 State Median
	1999	2000	2001	2002	2003	2004	2005	2006	2007	
Teacher	11.14	9.15	8.10	8.08	8.04	8.21	8.14	8.79	10.14	7.06
SSO^^					7.15	4.57	13.48	11.24	9.68	6.10

## NON-CERTIFICATED sick leave



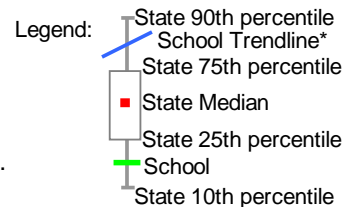
## TOTAL sick leave



Note: \* The school trendline is being trialled. It is only plotted when there is data for each calendar year.

^ There may be some discrepancy between the results from CASES & those from HRMS. The latter are considered to be more accurate.

^^ Data for SSO (School Services Officer) staff is only available from 2003.



# Teaching Staff Retention

**School no:** 8407

**School name:** Roxburgh College

**Explanation:** The retention rate of teaching staff is determined by matching staff payroll records for the last pay in June of one year (Year A), to the last pay in June of the following year (Year B).

**Source of data:** Human Resources Management System (HRMS).

## Teaching Staff\*

Year A	Year B	Number of Teaching Staff in Year A	Number of Teaching Staff retained in Year B	Teaching Staff Retention Rate	Statewide Average
2005	2006	112	101	90%	87%
2006	2007	122	107	88%	86%

Of the 112 teaching service staff at June 2005 (including those on leave without pay), 101 or 90% were still at the school at June 2006. This figure across all Government schools was 87%.

Of the 122 teaching service staff at June 2006 (including those on leave without pay), 107 or 88% were still at the school at June 2007. This figure across all Government schools was 86%.

## Ongoing Teaching Staff\*^

Year A	Year B	Number of Ongoing Teaching Staff in Year A	Number of Ongoing Teaching Staff retained in Year B	Ongoing Teaching Staff Retention Rate	Statewide Average
2005	2006	101	93	92%	91%
2006	2007	111	100	90%	90%

Of the 101 ongoing teaching service staff at June 2005 (including those on leave without pay), 93 or 92% were still at the school at June 2006. This figure across all Government schools was 91%.

Of the 111 ongoing teaching service staff at June 2006 (including those on leave without pay), 100 or 90% were still at the school at June 2007. This figure across all Government schools was 90%.

Notes: \* Teaching staff includes Principal class, Teacher class and Instructor class. Teaching staff employed as visiting teachers, guidance officers, curriculum consultants, etc. are excluded as they are not charged to a particular school.

^ Not including fixed term staff, except for where staff had changed from ongoing in Year A to fixed term in Year B.

# Bank Balances

**School no:** 8407

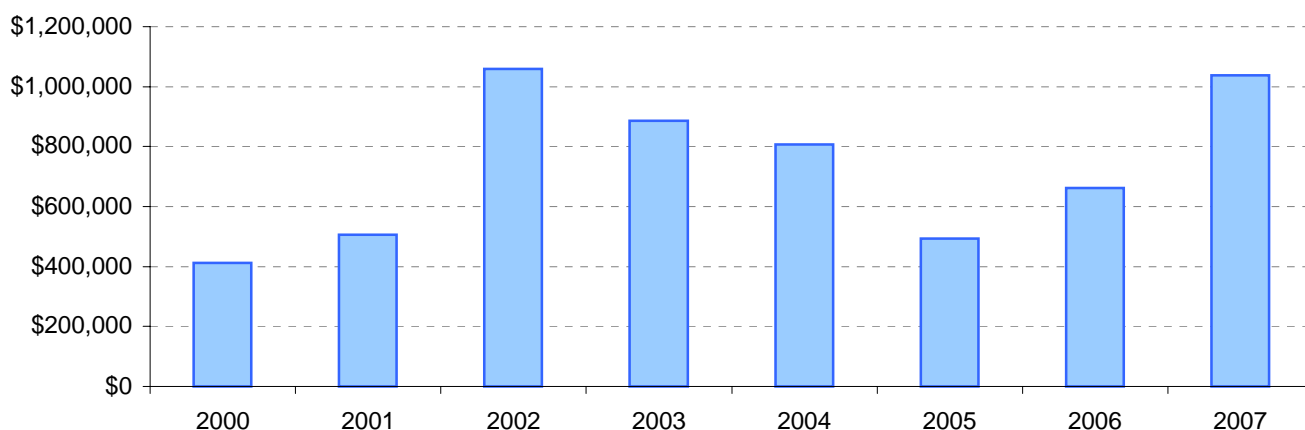
**School name:** Roxburgh College

**Explanation:** Account balance figures include official and investment accounts, and are calculated by taking the opening balance at 1st January plus the total receipts at 31st December less total payments at 31st December.

## Account Balances (Official plus Investment Accounts)

2000	\$411,391	2004	\$806,347
2001	\$506,374	2005	\$493,905
2002	\$1,058,657	2006	\$662,507
2003	\$886,996	2007	\$1,038,653

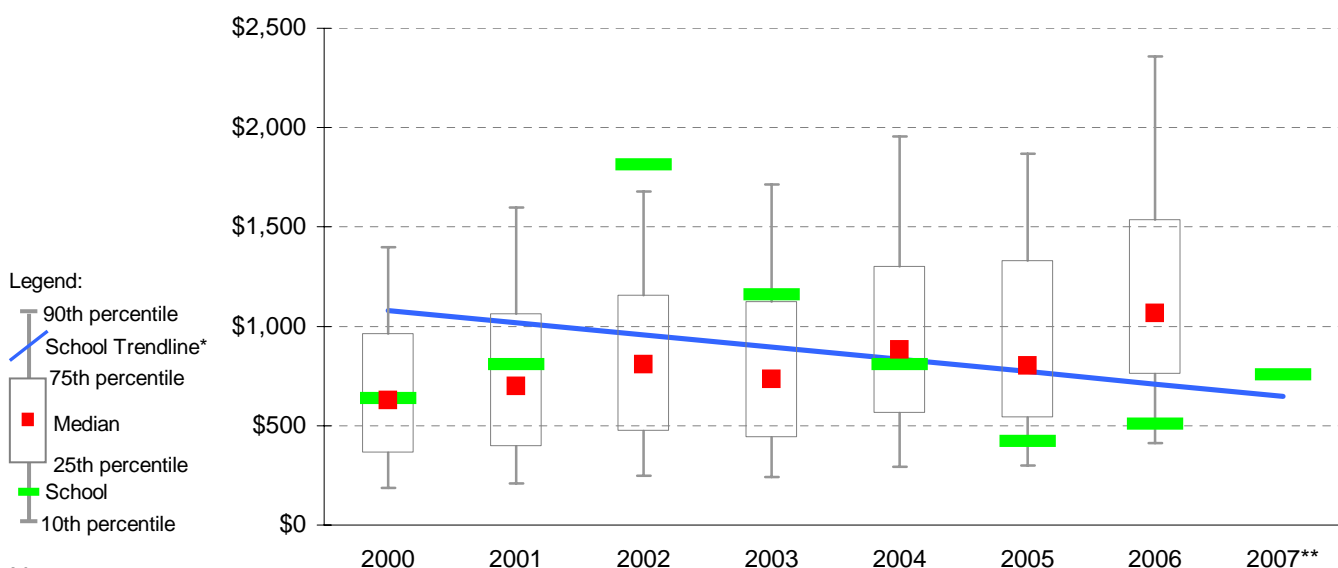
### Account Balances



## Account Balances (Official plus Investment Accounts) per student<sup>†</sup>

2000	\$638	2004	\$809
2001	\$808	2005	\$421
2002	\$1,814	2006	\$509
2003	\$1,160	2007	\$756

### School account balances per student enrolled in August census plotted on state Secondary benchmarks<sup>^</sup>



#### Notes:

\* The school trendline is being trialled. It is only plotted when there is data for each calendar year.

\*\* 2007 benchmarks will be calculated in August, when data from all schools has been submitted.

† The account balance per student has been calculated to enable some comparison to be made between schools.

^ Benchmarks for primary, secondary, pri/sec, SDS, special and language schools.